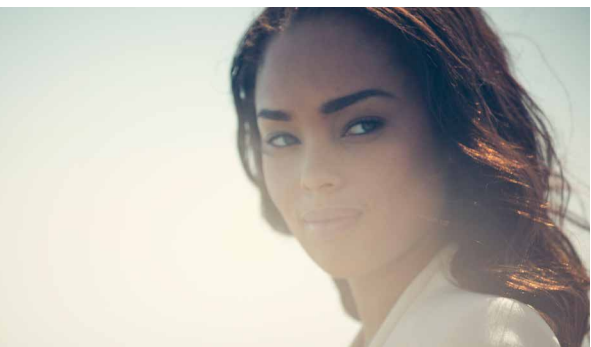




ACCORD



2017





THE 2017 ACCORD:

A LEGEND IN ITS TIME

There's a reason the Accord has been on *Car and Driver's* 10Best* list a record 31 times. Its sharp design, innovative technology and inspiring performance make it more than a car: it's a legacy, and the 2017 Accord is the latest evolution.

*Car and Driver, January 2017.



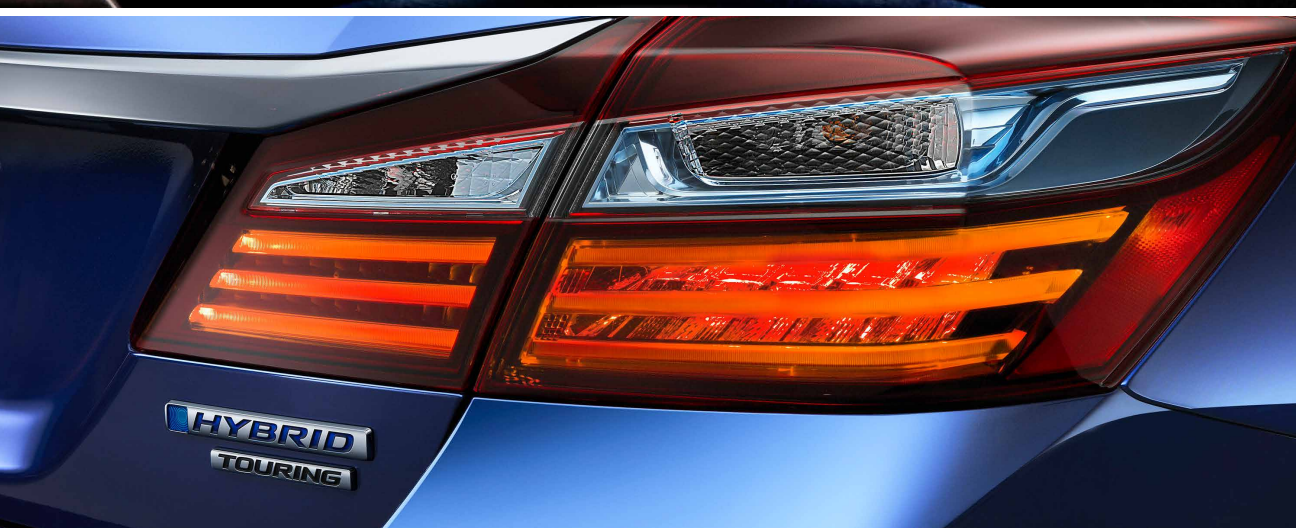
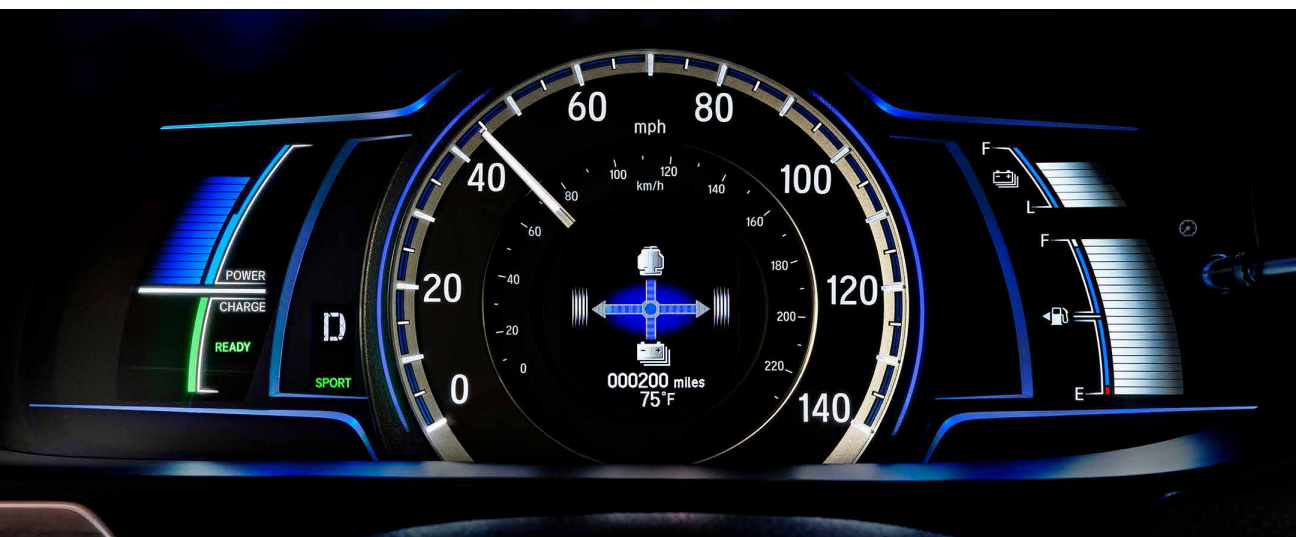
Accord Touring Sedan shown in Crystal Black Pearl.

THE 2017 ACCORD HYBRID:

ELEGANCE AND EFFICIENCY

Introducing the restyled 2017 Accord Hybrid with Sport Mode, the only 212-hp*, 49-mpg-rated† hybrid sold in America. It has all the sophistication and comfort you expect from an Accord, plus the Honda Sensing™ suite of safety and driver-assistive technologies, which comes standard on every trim, and a 5-Star Overall Vehicle Score** from NHTSA. It also features the second generation of our two-motor hybrid powertrain, which helps to reinforce our reputation as an environmental leader.

*Total-system horsepower as measured by the peak, concurrent output of the electric motor and gasoline engine. †49 city/47 highway/48 combined mpg rating. Based on 2017 EPA mileage ratings. Use for comparison purposes only. Your mileage will vary depending on driving conditions, how you drive and maintain your vehicle, battery-pack age/condition and other factors. **Government 5-Star Safety Ratings are part of the National Highway Traffic Safety Administration's (NHTSA's) New Car Assessment Program (www.safercar.gov).



5-Star Overall Vehicle Score**



Trims with front crash prevention features and specific headlights.

Accord Hybrid Touring shown in Vortex Blue Pearl.



STYLING:

LUXURIOUSLY APPOINTED

If it's what's on the inside that counts, consider the refined styling, polished accents and intelligent features in the Accord. The spacious cabin and wealth of technology invite you to step inside and make the car your own.

Accord Touring Sedan shown with Gray Leather.



LED HEADLIGHTS WITH AUTO HIGH-BEAM
Auto high-beam headlights dim when they sense other vehicles approaching (Touring).

FRONT GRILLE
A bold front grille gives the Accord an aggressive appearance that makes quite a statement.

ALLOY WHEELS
Available 19-inch alloy wheels add a sporty touch.

TECHNOLOGY:

INSPIRATION EVERYWHERE

Every part of the Accord is the product of human-centric innovation and creativity. From styling to technology to amenities, each convenient feature makes driving a simpler, more enjoyable task.



SMART ENTRY



Honda LANEWATCH



RAIN-SENSING WINDSHIELD WIPERS

SMART ENTRY

Available Smart Entry detects when your key is near the vehicle, unlocking your door automatically with the touch of your hand.

Honda LANEWATCH™¹

Help improve your view with available Honda LaneWatch. A small camera under the passenger-side mirror displays live video on the i-MID screen to help you change lanes.

RAIN-SENSING WINDSHIELD WIPERS

The windshield wipers automatically adjust their speed according to the rainfall, giving you one less thing to worry about in bad weather (Touring).

PARKING SENSORS

Help keep your bumpers ding-free with sensors that alert as you approach detected objects (Touring).



Honda SENSING:

ALWAYS AWARE

The available Honda Sensing suite of safety and driver-assistive technologies can help sense things you might miss while driving.



ROAD DEPARTURE MITIGATION SYSTEM (RDM)²

The RDM system can determine if you cross over detected lanes without signaling, can provide steering assistance to help you stay in your lane or provide braking to keep from leaving the roadway entirely.

COLLISION MITIGATION BRAKING SYSTEM^{TM3}

This innovative offering can help bring your Accord to a stop by automatically applying brake pressure when the system determines a frontal collision is unavoidable.

LANE KEEPING ASSIST SYSTEM (LKAS)⁴

With your hands on the steering wheel, long highway drives are easier with LKAS, which subtly adjusts steering to help keep the Accord centered in a detected lane.

FORWARD COLLISION WARNING (FCW)⁵

The FCW system can sense the presence of vehicles in front of you, and if it calculates that you're at risk of colliding with a detected vehicle, it activates audible and visual alerts.

LANE DEPARTURE WARNING⁶

A small camera searches for lane markings on the road. If it detects the driver making an unindicated lane departure, visual and audible alerts will signify the departure.

ADAPTIVE CRUISE CONTROL (ACC)⁷

ACC helps you maintain a set following interval behind a detected vehicle for highway driving, so you don't have to manually change your speed.





PERFORMANCE:

POWER AND GRACE

The Accord proves that excitement and efficiency can coexist. Its tight, responsive handling is complemented by a 185-hp* 4-cylinder engine or an available 278-hp* V-6.

*SAE net.

Accord Touring Sedan shown in White Orchid Pearl.



INTERIOR FEATURES:

DUAL-ZONE AUTOMATIC CLIMATE CONTROL
Both driver and front passenger can enjoy customizable temperature settings.

BLUETOOTH®⁸ HANDSFREELINK®
With Bluetooth HandsFreeLink you can place and receive calls without ever taking your hands off the wheel.*

Apple CarPlay™⁹
The available Apple CarPlay feature allows you to access several iPhone® features on the Display Audio touch-screen.

ANDROID AUTO™¹⁰
Android smartphone users can access Google Maps™, Google Now™, messages, music and other popular apps with the available Android Auto feature.

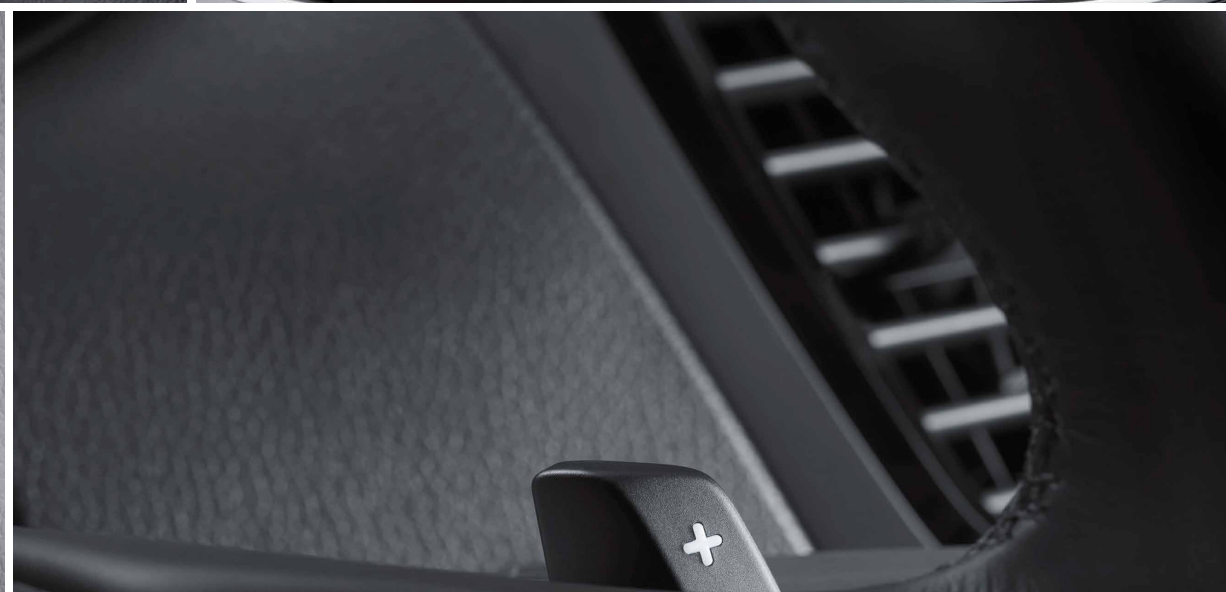
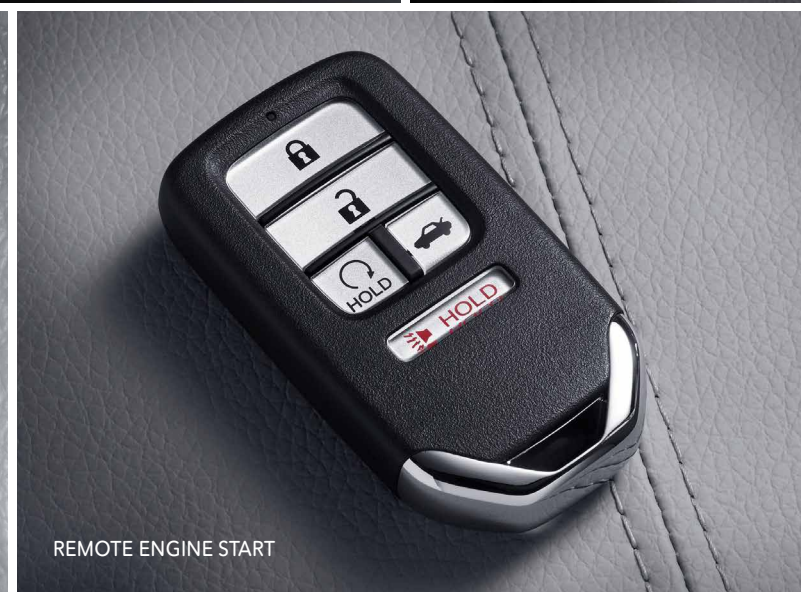
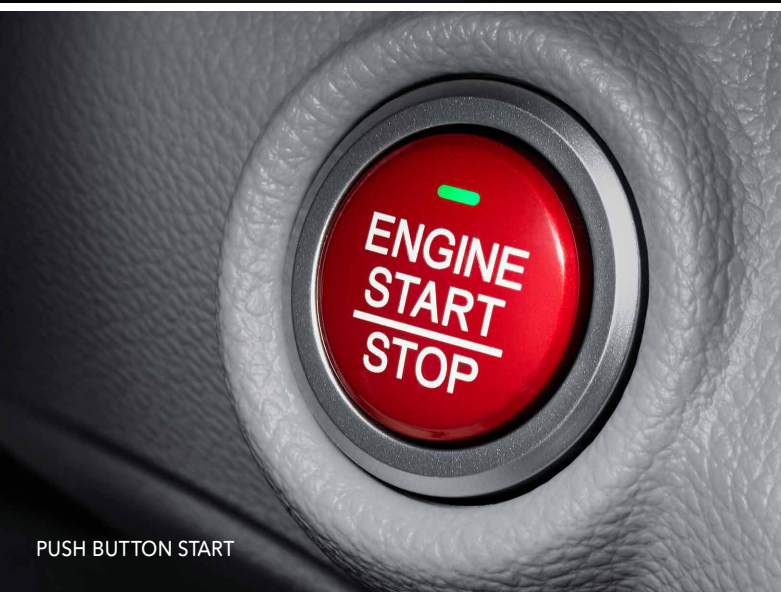
PUSH BUTTON START
Available push button start brings your engine to life with a simple touch.

REMOTE ENGINE START
Make sure your Accord is ready by the time you get there with available remote engine start, to pre-heat or cool your vehicle.

STEERING WHEEL-MOUNTED CONTROLS
Change the music or answer a phone call with your hands on the wheel.*

TWO-POSITION MEMORY
You and another driver can find the perfect positions for your seat when you're behind the wheel, and lock it in with the two-position memory system (EX-L and above).

PADDLE SHIFTERS
Available racing-inspired paddle shifters let you shift with your fingertips.



*Drive responsibly. Some state laws prohibit the operation of handheld electronic devices while operating a vehicle. For safety reasons, always launch your audio application or perform any other operation on your phone or audio device only when the vehicle is safely parked.

DUAL-ZONE AUTOMATIC CLIMATE CONTROL

BLUETOOTH HANDSFREELINK

ANDROID AUTO

PUSH BUTTON START

REMOTE ENGINE START

PADDLE SHIFTERS

STEERING WHEEL-MOUNTED CONTROLS

TWO-POSITION MEMORY



Accord Sport Sedan shown in Lunar Silver Metallic.



ANTI-LOCK BRAKING SYSTEM (ABS)



MULTI-ANGLE REARVIEW CAMERA



SAFETY:

HELPING PROTECT PRECIOUS CARGO

Every Accord is equipped with advanced safety features designed to help protect you and your passengers, mile after mile.



VEHICLE STABILITY ASSIST™ (VSA®)
VSA helps you stay on course in the event of an understeer or oversteer condition by braking individual wheels and/or reducing engine power to help restore your intended course!

SMARTVENT® AIRBAGS
Inside every Accord are front, front side and side curtain airbags with a rollover sensor. The SmartVent front side airbags are designed specifically to help protect the driver's or front passenger's upper torso in the event of a side-impact collision.**

TIRE PRESSURE MONITORING SYSTEM (TPMS)¹¹
Because lost tire pressure can dramatically affect a vehicle's performance, TPMS is designed to alert you if air pressure becomes significantly low in any tire.

MULTI-ANGLE REARVIEW CAMERA¹²
See more of what's behind you with the multi-angle rearview camera with dynamic guidelines.

ANTI-LOCK BRAKING SYSTEM (ABS)
ABS helps prevent wheels from locking up when braking hard, while Electronic Brake Distribution (EBD) balances braking forces at each wheel based on how the Accord is dynamically loaded.

ACE™ BODY STRUCTURE
By distributing frontal impact energy more evenly throughout the vehicle, the Advanced Compatibility Engineering™ body structure helps protect passengers.

*Government 5-Star Safety Ratings are part of the National Highway Traffic Safety Administration's (NHTSA's) New Car Assessment Program (www.safercar.gov). VSA is not a substitute for safe driving. It cannot correct the vehicle's course in every situation or compensate for reckless driving. Control of the vehicle always remains with the driver. **Honda reminds you and your passengers to always use seat belts and appropriate child seats. Children 12 and under are safest when properly restrained in the rear seat.

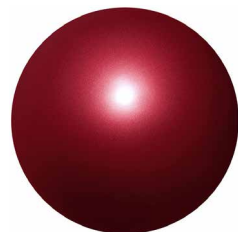
EXTERIOR



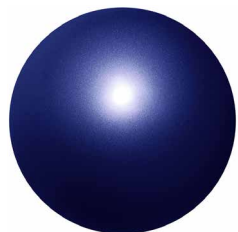
WHITE ORCHID PEARL



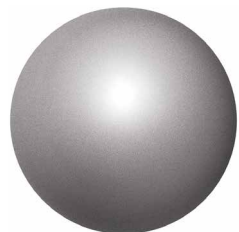
CHAMPAGNE FROST PEARL
(SEDAN ONLY)



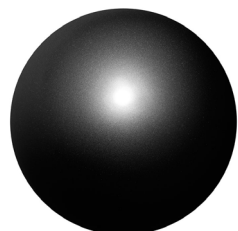
SAN MARINO RED
(SEDAN ONLY)



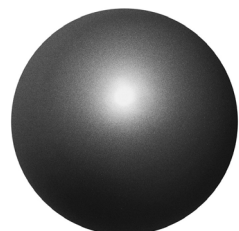
OBSIDIAN BLUE PEARL
(SEDAN ONLY)



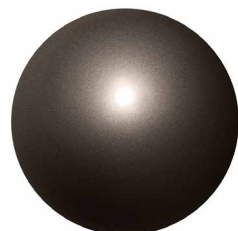
LUNAR SILVER METALLIC



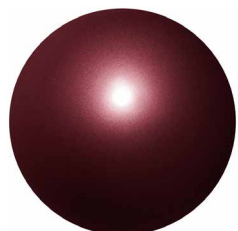
CRYSTAL BLACK PEARL



MODERN STEEL METALLIC



KONA COFFEE METALLIC
(SEDAN ONLY)



BASQUE RED PEARL II
(SEDAN ONLY)



CRIMSON PEARL
(HYBRID ONLY)



MANDARIN GOLD METALLIC
(HYBRID ONLY)

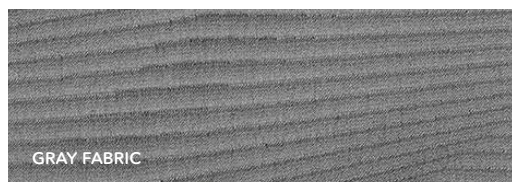


VORTEX BLUE PEARL
(HYBRID ONLY)



BLUE SKY METALLIC
(HYBRID ONLY)

INTERIOR LX



GRAY FABRIC

INTERIOR EX / HYBRID



GRAY FABRIC (SEDAN ONLY)

INTERIOR EX-L / TOURING



GRAY LEATHER (SEDAN ONLY)



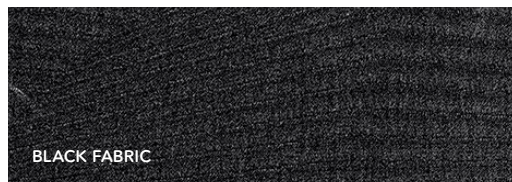
IVORY FABRIC



IVORY FABRIC



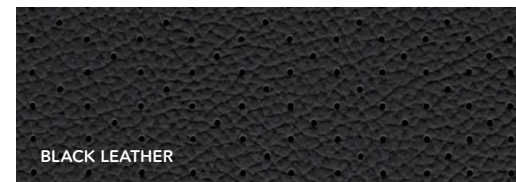
IVORY LEATHER



BLACK FABRIC

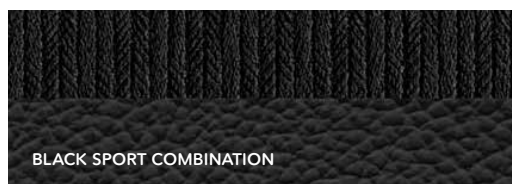


BLACK FABRIC



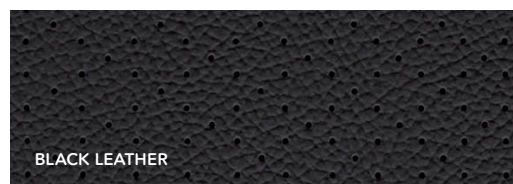
BLACK LEATHER

INTERIOR SPORT



BLACK SPORT COMBINATION

INTERIOR SPORT SE



BLACK LEATHER

SPECIFICATIONS



ACCORD SEDAN



ACCORD HYBRID

LX

- 185-hp,¹³ 2.4-liter i-VTEC® 4-cylinder engine with direct injection
- 6-speed manual or available continuously variable transmission (CVT) with Sport Mode
- 16-inch alloy wheels
- Multi-angle rearview camera¹² with dynamic guidelines
- Taillights with integrated LED light bars
- Dual-zone automatic climate control system
- Tilt and telescopic steering column
- Intelligent Multi-Information Display
- Bluetooth® HandsFreeLink® and streaming audio
- Pandora®¹⁴ compatibility
- SMS text message function¹⁵
- USB Audio Interface¹⁶
- Exterior temperature indicator
- Available Honda Sensing™ suite of safety and driver-assistive features (CVT model only)

SPORT adds to or replaces LX features

- 189-hp,¹⁷ 2.4-liter i-VTEC 4-cylinder engine with direct injection
- 6-speed manual or available continuously variable transmission (CVT) with Sport Mode and paddle shifters
- 19-inch alloy wheels
- LED Daytime Running Lights (DRL)
- LED fog lights
- Dual chrome exhaust finishers
- Leather-wrapped steering wheel
- Aluminum pedals
- Driver's seat with 10-way power adjustment, including power lumbar support
- 60/40 split fold-down rear seatback with center armrest

SPORT SE adds to or replaces Sport features

- Black leather-trimmed seats with red stitching
- Heated front seats
- Special Edition badging

EX adds to or replaces LX features

- 17-inch alloy wheels
- LED Daytime Running Lights (DRL)
- Honda LaneWatch™¹¹
- LED fog lights
- One-touch power moonroof with tilt feature
- Smart Entry with push button start
- Heated power side mirrors with integrated turn indicators
- Driver's seat with 10-way power adjustment, including power lumbar support
- 60/40 split fold-down rear seatback with center armrest
- 7-inch Display Audio with electrostatic touch-screen
- HondaLink®¹⁸
- Apple CarPlay™⁹
- Android Auto™¹⁰
- SiriusXM® Radio¹⁹
- HD Radio™²⁰

EX-L adds to or replaces EX features

- Standard continuously variable transmission (CVT) with Sport Mode
- Automatic-dimming rearview mirror
- Driver's seat with two-position memory
- Front passenger's seat with 4-way power adjustment
- Leather-trimmed seats
- Heated front seats
- 360-watt premium audio system with 7 speakers, including subwoofer

EX-L with Navigation

adds to or replaces EX-L features

- Honda Satellite-Linked Navigation System™²¹ with voice recognition and Honda HD Digital Traffic
- Standard Honda Sensing suite of safety and driver-assistive features

EX-L V-6 adds to or replaces EX-L features

- 278-hp,²² 3.5-liter i-VTEC V-6 engine
- 6-speed automatic transmission with Sport Mode
- Variable Cylinder Management™ (VCM®)
- Dual chrome exhaust finishers

EX-L V-6 with Navigation

adds to or replaces EX-L V-6 features

- Honda Satellite-Linked Navigation System™²¹ with voice recognition and Honda HD Digital Traffic
- Standard Honda Sensing suite of safety and driver-assistive features

TOURING adds to or replaces EX-L V-6 with Navigation features

- 19-inch alloy wheels
- Rain-sensing windshield wipers
- Body-colored parking sensors (front/rear)
- LED headlights with auto-on/off
- Heated outboard rear seats
- Auto high-beam headlights

HYBRID

- 2.0-liter, DOHC i-VTEC 4-cylinder engine with electric motor
- 212 total-system horsepower²³
- LEV3-SULEV30 CARB emissions rating²⁴
- Remote engine start
- 17-inch alloy wheels
- Forward Collision Warning (FCW)⁵
- Lane Departure Warning (LDW)⁶
- Collision Mitigation Braking System™ (CMBS™)³
- Road Departure Mitigation System (RDM)²
- Lane Keeping Assist System (LKAS)⁴
- Adaptive Cruise Control (ACC)⁷
- Honda LaneWatch¹¹
- Smart Entry with push button start
- Driver's seat with 10-way power adjustment, including power lumbar support

HYBRID EX-L

adds to or replaces Hybrid features

- One-touch power moonroof with tilt feature
- Leather-wrapped steering wheel and shift knob
- Driver's seat with two-position memory
- Front passenger's seat with 4-way power adjustment
- Leather-trimmed seats
- Heated front seats
- Apple CarPlay⁹
- Android Auto¹⁰
- SiriusXM Radio¹⁹
- HD Radio²⁰
- 360-watt premium audio system with 7 speakers, including subwoofer
- Compass

HYBRID TOURING

adds to or replaces Hybrid EX-L features

- Auto high-beam headlights
- Body-colored parking sensors (front/rear)
- LED headlights with auto-on/off
- Body-colored side sills
- Heated outboard rear seats
- Honda Satellite-Linked Navigation System™²¹ with voice recognition, turn-by-turn directions, Honda HD Digital Traffic and Song By Voice® (SBV)

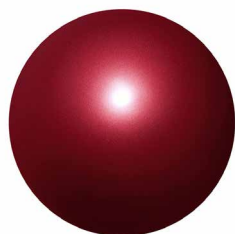
EXTERIOR



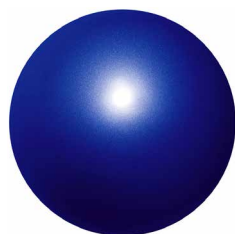
WHITE ORCHID PEARL



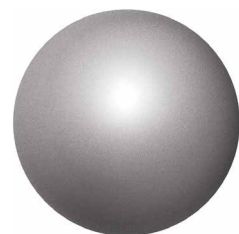
DEEP BLUE OPAL METALLIC



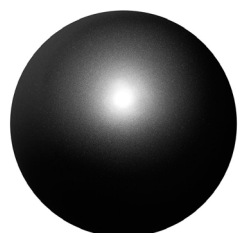
SAN MARINO RED



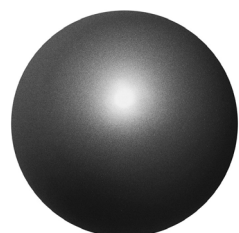
STILL NIGHT PEARL



LUNAR SILVER METALLIC

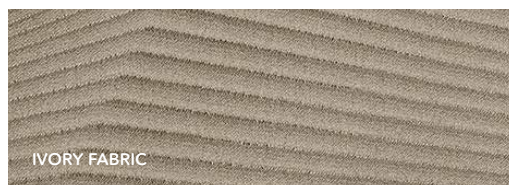


CRYSTAL BLACK PEARL

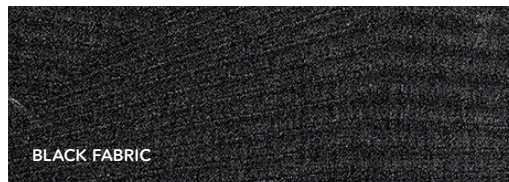


MODERN STEEL METALLIC

INTERIOR LX-S

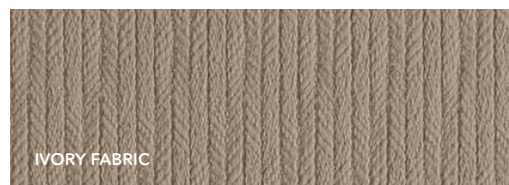


IVORY FABRIC



BLACK FABRIC

INTERIOR EX



IVORY FABRIC

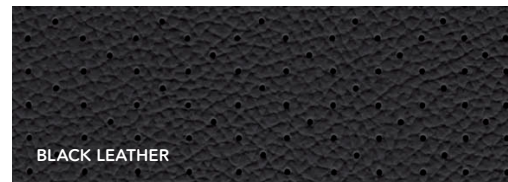


BLACK FABRIC

INTERIOR EX-L / TOURING



BLACK / IVORY LEATHER



BLACK LEATHER

¹ Display accuracy will vary based on weather, size of object and speed, and the display may not show all relevant traffic. The display is not a substitute for your own direct visual assessment of traffic conditions before changing lanes. ² Road Departure Mitigation only alerts drivers when lane drift is detected without a turn signal in use and can apply mild steering torque to assist driver in maintaining proper lane position and/or brake pressure to slow the vehicle's departure from a detected lane. RDM may not detect all lane markings or lane departures; accuracy will vary based on weather, speed and road condition. System operation affected by extreme interior heat. Driver remains responsible for safely operating vehicle and avoiding collisions. ³ Depending on the circumstances, Collision Mitigation Braking System (CMBS) may not go through all the alert stages before initiating the last stage (of collision mitigation). CMBS cannot detect all objects ahead and may not detect a given object; accuracy will vary based on weather, speed and other factors. System operation affected by high interior heat. Driver remains responsible for safely operating vehicle and avoiding collisions. ⁴ Lane Keeping Assist System (LKAS) only assists driver in maintaining proper lane position when lane markings are identified without a turn signal in use and can only apply mild steering torque to assist. LKAS may not detect all lane markings; accuracy will vary based on weather, speed and road condition. System operation affected by extreme interior heat. Driver remains responsible for safely operating vehicle and avoiding collisions. ⁵ Forward Collision Warning (FCW) cannot detect all objects ahead and may not detect a given object; accuracy will vary based on weather, speed and other factors. System operation affected by extreme interior heat. FCW does not include a braking function. Driver remains responsible for safely operating vehicle and avoiding collisions. ⁶ Lane Departure Warning (LDW) only alerts drivers when lane drift is detected without a turn signal in use. LDW may not detect all lane markings or lane departures; accuracy will vary based on weather, speed and road condition. System operation affected by extreme interior heat. Driver remains responsible for safely operating vehicle and avoiding collisions. ⁷ Adaptive Cruise Control (ACC) cannot detect all objects ahead and may not detect a given object; accuracy will vary based on weather, speed and other factors. ACC should not be used in heavy traffic, poor weather or on winding roads. ACC only includes a limited braking function; driver remains responsible for slowing or stopping the vehicle to avoid a collision. ⁸ The Bluetooth® word mark and logos are owned by the Bluetooth SIG, Inc., and any use of such marks by Honda Motor Co., Ltd., is under license. ⁹ Apple CarPlay is a trademark of Apple Inc. ¹⁰ Android, Android Auto and other marks are trademarks of Google Inc. ¹¹ For optimal tire wear and performance, tire pressure should be checked regularly with a gauge. Do not rely solely on the monitor system. Please see your Honda dealer for details. ¹² Always visually confirm that it is safe to drive before backing up; the rearview camera display does not provide complete information about all conditions and objects at the rear of your vehicle. ¹³ 185 hp @ 6400 rpm (SAE net). ¹⁴ Pandora, the Pandora logo, and the Pandora trade dress are trademarks or registered trademarks of Pandora Media, Inc. Used with permission. Compatible with select smartphones. See: www.pandora.com/anywhere/mobile. Not all devices compatible with USB connection. Your wireless carrier's rate plans apply. ¹⁵ Compatible with select phones with Bluetooth®. Your wireless carrier's rate plans apply. State or local laws may limit use of texting feature. Only use texting feature when conditions allow you to do so safely. ¹⁶ The USB Audio Interface is used for direct connection to and control of some current digital audio players and other USB devices that contain MP3, WMA or AAC music files. Some USB devices with security software and digital rights-protected files may not work. Please see your Honda dealer for details. ¹⁷ 189 hp @ 6400 rpm (SAE net). ¹⁸ Depending on use, HondaLink® can transmit to Honda and its providers a vehicle's location, speed and other operating conditions, information that may be tied to the vehicle identification number (VIN) and can be combined to create a track of a vehicle. For a full explanation of HondaLink functionality and Honda's data use and privacy policy, see <http://owners.honda.com/hondalink>. ¹⁹ SiriusXM services require a subscription after any trial period. If you decide to continue your SiriusXM service at the end of your trial subscription, the plan you choose will automatically renew and bill at then-current rates until you call SiriusXM at 1-866-635-2349 to cancel. See our Customer Agreement for complete terms at www.siriusxm.com. Fees and programming subject to change. XM satellite service is available only to those at least 18 years and older in the 48 contiguous United States and D.C. ©2017 SiriusXM Radio Inc. Sirius, XM and all related marks and logos are trademarks of SiriusXM Radio Inc. ²⁰ HD Radio is a proprietary trademark of iBiquity Digital Corporation. ²¹ The Honda Satellite-Linked Navigation System™ is available on non-hybrid EX-L models and standard on all Touring models in the United States, Canada and Puerto Rico. (Honda HD Digital Traffic service only available in the United States, except Alaska.) Please see your Honda dealer for details. ²² 278 hp @ 6200 rpm (SAE net). ²³ Total system horsepower as measured by the peak, concurrent output of the electric motor and gasoline engine. ²⁴ LEV3-SULEV30 (Super-Ultra-Low-Emission Vehicle) models as certified by the California Air Resources Board (CARB). ²⁵ 3-Year/36,000-Mile Limited Warranty. ²⁶ 5-Year/60,000-Mile Limited Powertrain Warranty. Ordinary maintenance or adjustments, parts subject to normal wear and replacement, and certain items are excluded. Please see your Honda dealer for the terms and conditions of the limited warranties. ²⁷ The battery-pack limited warranty may vary. Please see your Honda dealer for details. ²⁸ NHL and the NHL Shield are registered trademarks of the National Hockey League. ©NHL 2017. All Rights Reserved. ²⁹ The Twitter bird logo and Stylized V logo are trademarks of Twitter, Inc., or its affiliates. iPhone is a registered trademark of Apple Inc. **Honda reminds you and your passengers to always use seat belts and appropriate child seats. Children 12 and under are safest when properly restrained in the rear seat.** Specifications, features, illustrations and equipment shown in this brochure are based upon latest available information at the time of printing. Although descriptions are believed to be correct, accuracy cannot be guaranteed. American Honda Motor Co., Inc., reserves the right to make changes at any time, without notice or obligation, in colors, specifications, accessories, materials and models. Some features mentioned herein are not available in all areas. Please see your Honda dealer for details. Some vehicles may be shown with optional equipment. Available = Optional. All images contained herein are either owned by American Honda Motor Co., Inc., or used under a valid license. It is a violation of federal law to reproduce these images without express written permission from American Honda Motor Co., Inc., or the individual copyright owner of such images. Honda Financial Services is a DBA of American Honda Finance Corporation. Honda, the H-mark symbol, Honda Care, Honda LaneWatch, HondaLink, Honda Satellite-Linked Navigation System, Honda Sensing, Advanced Compatibility Engineering, ACE, Collision Mitigation Braking System, EarthDreams, ECON logo, HandsFreeLink, i-VTEC, SmartVent, Song By Voice, Variable Cylinder Management, VCM, Vehicle Stability Assist and VSA are trademarks of Honda Motor Co., Ltd. ©2017 American Honda Motor Co., Inc.

SPECIFICATIONS



ACCORD COUPE

LX-S

- 185-hp,¹³ 2.4-liter i-VTEC® 4-cylinder engine with direct injection
- 6-speed manual or available continuously variable transmission (CVT) with Sport Mode and paddle shifters
- 17-inch alloy wheels
- Multi-angle rearview camera¹² with dynamic guidelines
- Taillights with integrated LED light bars
- Dual-zone automatic climate control system
- Tilt and telescopic steering column
- Intelligent Multi-Information Display
- Bluetooth®⁸ HandsFreeLink® and streaming audio
- Pandora®¹⁴ compatibility
- SMS text message function¹⁵
- USB Audio Interface¹⁶
- Exterior temperature indicator
- Available Honda Sensing™ suite of safety and driver-assistive features (CVT model only)

EX adds to or replaces LX-S features

- 18-inch alloy wheels
- LED Daytime Running Lights (DRL)
- Honda LaneWatch™¹
- One-touch power moonroof with tilt feature
- Smart Entry with push button start
- LED fog lights
- Heated power side mirrors with integrated turn indicators
- Driver's seat with 10-way power adjustment, including power lumbar support
- 360-watt premium audio system with 7 speakers, including subwoofer
- 7-inch Display Audio with electrostatic touch-screen
- HondaLink®¹⁸
- Apple CarPlay™⁹
- Android Auto™¹⁰
- SiriusXM® Radio¹⁹
- HD Radio™²⁰

EX-L adds to or replaces EX features

- Standard continuously variable transmission (CVT) with Sport Mode and paddle shifters
- Leather-wrapped steering wheel
- Automatic-dimming rearview mirror
- Driver's seat with two-position memory
- Leather-trimmed seats
- Heated front seats

EX-L with Navigation adds to or replaces EX-L features

- Honda Satellite-Linked Navigation System™²¹ with voice recognition and Honda HD Digital Traffic
- Standard Honda Sensing suite of safety and driver-assistive features

EX-L V-6 adds to or replaces EX-L features

- 278-hp,²² 3.5-liter i-VTEC V-6 engine
- 6-speed manual or 6-speed automatic transmission with Sport Mode and paddle shifters
- Variable Cylinder Management™ (VCM®) (6AT model only)
- Dual chrome exhaust finishers

EX-L V-6 with Navigation adds to or replaces EX-L V-6 features

- 6-speed automatic transmission with Sport Mode and paddle shifters
- Honda Satellite-Linked Navigation System™²¹ with voice recognition and Honda HD Digital Traffic
- Standard Honda Sensing suite of safety and driver-assistive features

TOURING adds to or replaces EX-L V-6 with Navigation features

- 19-inch alloy wheels
- Rain-sensing windshield wipers
- Body-colored parking sensors (front/rear)
- LED headlights with auto-on/off
- Auto high-beam headlights

KEY STANDARD FEATURES FOR ALL ACCORD MODELS

- Multi-angle rearview camera¹² with dynamic guidelines
- Advanced Compatibility Engineering™ (ACE™) body structure
- Auto-on/off headlights
- Dual-zone automatic climate control system
- Pandora®¹⁴ compatibility
- SMS text message function¹⁵
- USB Audio Interface¹⁶



Whether you buy or lease a Honda vehicle, Honda Financial Services can assist you with the process. Please ask your dealer which lease or purchase plan best suits your needs.



Honda Care™ is an affordable, comprehensive vehicle and travel protection plan backed by Honda reliability, service and parts. Please see your Honda dealer for details.



Manufactured to the same strict standards as Honda vehicles, Honda Genuine Accessories are the perfect way to personalize and protect your vehicle. Please see your Honda dealer for details.

All 2017 Honda vehicles - and any Honda Genuine Accessories installed at the time of vehicle purchase - are covered by a 3-year/36,000-mile limited warranty.²⁵ Plus, Honda cars and trucks are covered by a 5-year/60,000-mile Limited Powertrain Warranty.²⁵ The Battery-Pack Limited Warranty²⁶ is 8 years/100,000 miles (ULEV rating) (non-CARB states). For more information or assistance, see your Honda dealer or please give us a call at 1-800-33-Honda.

24-hour emergency road service is available to you in the United States, Puerto Rico and Canada throughout your 3-year/36,000-mile limited warranty term, starting with 2015 vehicles. Services include jump-starting, flat tire and lockout assistance, towing, and more (limitations apply). Call 1-866-864-5211.



Powerful. Agile. Versatile enough to handle almost any condition. It's no wonder Honda is the official vehicle of the NHL.²⁷

Join the millions of other Honda fans and connect with us socially.²⁸

