

2009 Honda Civic



Coupe / Si Coupe



SKIN + TINGLE CHEST + THUMP HEAD + RUSH



JUST ADD
ASPHALT

Civic Si Coupe shown in Redline Orange Pearl with available Honda Satellite-Linked Navigation System.^{TM1}



Turn every day into an adventure, every commute into an escape. The catalyst? The 2009 Honda Civic Coupe. With a bolder front grille, sleeker front bumper and a palette of head-turning colors, the new Civic Coupe will definitely spark a reaction. And that always increases the fun.

Civic EX Coupe shown in Atomic Blue Metallic.

RAISE

YOUR HAPPINESS QUOTIENT

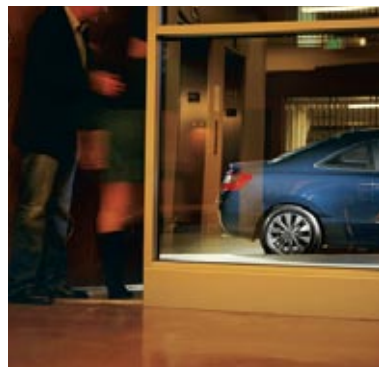


Civic EX Coupe shown in Royal Blue Pearl with available Honda Satellite-Linked Navigation System!



Unit-body construction. MacPherson strut suspension. Multi-link rear suspension. All coming together to help keep wheels flat on the pavement for better cornering, while lightweight components help promote quicker reactions and more intuitive handling. Your passengers, on the other hand, will consider Civic's smooth, comfortable ride to be the ultimate response.

Ignite passion. Turn the key and Civic's race-bred technology revs to life. There's the thrill of a super-efficient 140-hp, 1.8-liter engine.² The instant response of a Drive-by-Wire™ throttle system. And the high-end horsepower of Honda's advanced i-VTEC® technology. What you won't experience is compromise. So whether you choose a 5-speed automatic or a 5-speed manual transmission, the passion remains the same.





Civic EX Coupe shown in Polished Metal Metallic.

48HOURS

UNTIL YOU HAVE TO RETURN TO REALITY

The office isn't going anywhere. Neither is your apartment. So have some fun this weekend. On EX and Si, the available Honda Satellite-Linked Navigation System¹ with voice recognition will point you in the right direction.* And if you connect your compatible cell phone to the Bluetooth®² HandsFreeLink®, you can make and receive calls by a simple verbal command. So what's next?

*Some roads unverified. See the owner's manual for more details on coverage.

Drive responsibly. Some state laws prohibit the operation of handheld electronic devices while operating a vehicle. For safety reasons, always launch your audio application or perform any other operation on your phone or audio device only when the vehicle is safely parked.

Two Sheds featured courtesy of Filter U.S. Recordings © and © 2008.



Civic EX-L Coupe shown with Gray Leather and available Honda Satellite-Linked Navigation System!

INJECT
ATTITUDE

Insist on comfort and style. Refuse anything less than a spacious cabin with room for five. Power windows. Available leather. Just don't overlook the details like contoured seat bolsters and a tilt and telescopic steering column. If EX or Si are more your personality, you'll enjoy extras like steering wheel-mounted controls and the flexibility of a 60/40 split rear seat.



PLAY IT YOUR WAY

Choose an LX Coupe and you get a serious 160-watt AM/FM/CD 6-speaker audio system that plays MP3- or Windows Media® Audio* (WMA)-compatible CDs. Plus an auxiliary input jack for your favorite MP3 player. Opt for EX or Si and you get a powerful 350-watt system with 7 speakers, including subwoofer and amplifier. Plus Honda's new USB Audio Interface,⁵ a port that syncs up with your portable music player. Go with a navigation-equipped model and you get the additional experience of listening to downloaded music files through a digital audio-card reader.¹ Both formats play through Civic's audio controls.

PERSONAL VIEWS

Greet the day. And the night.
On EX and Si, you get a power
moonroof of your own.

iPod is a registered trademark of Apple Computer, Inc., registered in the U.S. and other countries. iPod not included.

Drive responsibly. Some state laws prohibit the operation of handheld electronic devices while operating a vehicle. For safety reasons, always launch your audio application or perform any other operation on your phone or audio device only when the vehicle is safely parked.

A silver Honda Civic Si Coupe is shown from a front-three-quarter view, leaning into a turn on a racetrack. The car is in motion, with motion blur on the wheels and the background. The track has a red and white curb. The sky is a clear, light blue. The car's headlights are on, and the front grille features the Honda logo and a small 'Si' badge. The overall scene conveys a sense of speed and performance.

Si

INITIATE
G-FORCE
TURNS

This is Civic Si. Where extreme performance challenges the laws of physics every day. And since the Si is usually in motion, we'd like to point out some styling cues you might miss. Like new fog lights and 17-inch alloy wheels. Get inside and the experience revs up, thanks to a close-ratio 6-speed manual transmission and Vehicle Stability Assist™ (VSA®), the technology that helps to keep you on your intended path. Even when you set out to carve your own.

Civic Si Coupe shown in Alabaster Silver Metallic.

Si

K20 197hp⁺
8000rpm + 11:1 + 18"



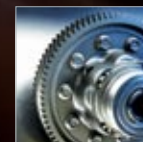
Air + fuel. It's the first step in a chain reaction that results in explosive power. The kind that's made Honda's 2.0-liter K20 i-VTEC engine a legend among sport-compacts. But potent performance doesn't rely on force alone. Civic Si is jam-packed with advanced technology. Take the i-VTEC engine with 3-rocker arms for a wider powerband. Or Variable Timing Control™ (VTC™) that boosts both power and economy.² Together, these innovations bring Si close to producing 100 hp per liter. Just what you'd expect from a company famous for getting the most out of a 4-cylinder.

Si's on-demand performance is the direct result of obsessing over the details. Consider Si's close-ratio 6-speed manual transmission. Meticulously tuned MacPherson strut front and multi-link rear suspension system with firm spring rates. Beefy stabilizer bars. Electric Power Steering (EPS). And every other performance feature listed on these pages. Proof that input equals output.



Few cars in the world can rev this high. A closer look under Si's hood explains why. Two different cam profiles, one for low rpm and one for high rpm, keep horsepower up across the rev range, while a unique crankshaft balancer helps everything spin smoothly all the way to redline.

A high compression ratio is more than a hint at the excitement under foot.



A helical limited-slip differential has one function: to improve handling performance by increasing traction.

So the wheel with the most traction gets the maximum amount of torque. After all, what good is power if you can't get it down to the pavement? But performance cars enjoy an added benefit. Namely the thrill of accelerating through a corner.

And to keep the focus on exhilaration, Honda Accessories offers big 18-inch wheels. These available alloys not only get the job done, but they look fast too. Even when you're standing still.



Civic Si Coupe shown in Rallye Red with accessory HFP 18-inch alloy wheels and tires.



Si

Civic Si Coupe shown with Black Fabric and available Honda Satellite-Linked Navigation System!



POSITIVE CONTACT

Spirited driving requires a solid connection at every contact point. Drilled aluminum pedals with rubber studs provide the proper amount of grip.



RED IS FOR FUN

A red LED shift light located next to the digital speedometer delivers eyes-forward fun.

LEATHER TOUCH POINTS

There's something about the feel of a leather-trimmed aluminum shift knob and steering wheel that communicates action.



HANDS-ON CONTROL

Steering wheel-mounted cruise and audio controls keep the action up front, so you don't have to take your eyes off the road.





Thunderhill Civic Si Coupe

The custom vehicle shown uses non-Honda genuine parts that may affect manufacturer's warranties or vehicle performance.

Civic EX Coupe shown in Rallye Red.



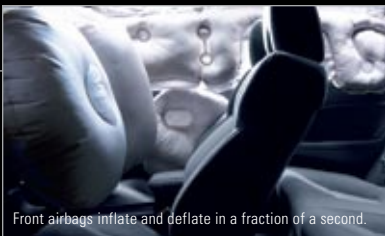
SAFETY

PLUS INNOVATION

Increase confidence. Enhance peace of mind. Put your best thinking on safety into every vehicle and test it against industry standards. The results? Several Honda models earned 5-star crash-test ratings* from the National Highway Traffic Safety Administration (NHTSA), including our newest Civic Coupe and Sedan.

*Government star ratings are part of the National Highway Traffic Safety Administration's (NHTSA's) New Car Assessment Program (www.safercar.gov).

Civic EX Coupe shown in Polished Metal Metallic.



Front airbags inflate and deflate in a fraction of a second.

SIDE AIRBAG WITH OPDS AND SIDE CURTAIN AIRBAGS

Standard on all Civics, side and side curtain airbags help lessen head, neck and torso injuries in a sufficient side collision. The front passenger's front side airbag features Honda's Occupant Position Detection System (OPDS)* to help prevent the side airbag from deploying if a child or small-statured adult is in the airbag's path of deployment.



ACE BODY STRUCTURE

In front-end collisions, Honda's Advanced Compatibility Engineering™ (ACE™) body structure increases impact compatibility with different-sized vehicles. It also helps redirect crash energy around the passenger compartment.

FRONT AIRBAGS

Dual-stage, dual-threshold front airbags deploy at one of two rates and thresholds, depending on the severity of impact and seat-belt use.

SIDE-IMPACT PROTECTION

High-tensile steel beams placed in the Civic Coupe's doors help to prevent the intrusion of crash forces in a side impact.

AUTOMATIC TENSIONING SYSTEM

A front seat-belt automatic tensioning system helps hold the front-seat occupants securely in a collision. The system is triggered by the same sensors that deploy the airbags.

ACTIVE FRONT HEAD RESTRAINTS

In a sufficient rear-impact collision, the active front head restraints are designed to move forward and up to help reduce neck injury.

4-WHEEL DISC BRAKES

Civic EX and Si models are outfitted with 4-wheel disc brakes with ABS. They help provide quick, confident stopping power when you need it.

VEHICLE STABILITY ASSIST

Standard on EX-L and Si, VSA can brake individual wheels and/or reduce engine power to respond to understeer or oversteer and help restore you on your intended path.

ABS WITH EBD

The anti-lock braking system (ABS) helps you maintain steering control during hard stops. Electronic Brake Distribution (EBD) compensates for extra rear weight by increasing rear brake force.

DAYTIME RUNNING LIGHTS

The Civic Coupe enhances its visibility to others by incorporating Daytime Running Lights (DRL).

TIRE PRESSURE MONITORING SYSTEM*





This system monitors the pressure in all four tires, and alerts the driver when pressure loss in any tire becomes significantly low.

*Honda reminds you and your passengers to always buckle up. Children 12 and under are safest when properly restrained in the rear seat.

"WE ONLY HAVE ONE FUTURE,
AND IT WILL BE MADE OF OUR
DREAMS"

— Soichiro Honda



A dream is a view of the  world not as it is, but as it could be. For 60 years, Honda has encouraged its associates to aim beyond what is currently possible. All for the purpose of progressing human mobility. This spirit has resulted in advances in environmental technology, like the hydrogen fuel cell FCX Clarity, that brings us closer to a future filled with blue skies. It  guides us as we strive to exceed government safety regulations and has led to industry-changing innovations on the ground, in the water, and, with the HondaJet,[™] in the air. And it pushes us to use premier race circuits as test  grounds for our ideas. Moving forward, our minds are open to new ideas, no matter where they come from. Because you  never know what will be until you discover what can be. **dreams.honda.com**



Civic Si Coupe shown in Crystal Black Pearl with accessory HFP 18-inch alloy wheels and tires.

LX

Adds to or replaces DX features:

- Cruise control
- Security system with remote entry
- 16" wheels with full covers
- Rear stabilizer bar
- 160-watt AM/FM/CD audio system with 6 speakers
- MP3/Windows Media Audio⁴ (WMA) playback capability
- MP3/auxiliary input jack
- Air conditioning with air-filtration system
- Power door locks with auto lock feature
- Power windows with auto-up/down driver's window
- Floor mats



DX

- 140-hp, 1.8-liter, SOHC i-VTEC[®] 4-cylinder engine
- Drive-by-Wire throttle system
- ULEV-2 (Ultra-Low-Emission Vehicle)
- 5-speed manual transmission
- 15" wheels with full covers
- Advanced Compatibility Engineering (ACE) body structure
- Daytime Running Lights (DRL)
- ABS with Electronic Brake Distribution (EBD)
- Tire Pressure Monitoring System⁵ (TPMS)
- Front, front side and side curtain airbags
- Driver's and front passenger's active head restraints
- Power windows, tilt and telescopic steering column



EX

Adds to or replaces LX features:

- 16" alloy wheels
- 4-wheel disc brakes
- One-touch power moonroof with tilt feature
- Steering wheel-mounted audio controls
- 60/40 split fold-down rear seat
- 350-watt AM/FM/CD premium audio system with 7 speakers, including sub-woofer
- USB Audio Interface⁵
- Available navigation system¹
- Chrome exhaust finisher

EX-L features:

- Leather-trimmed seats
- Leather-wrapped steering wheel
- Heated front seats
- Heated side mirrors
- Vehicle Stability Assist (VSA)



Si

Adds to or replaces EX features:

- 197-hp, 2.0-liter, DOHC i-VTEC engine
- Helical limited-slip differential
- Close-ratio 6-speed manual transmission
- 17" alloy wheels
- Tachometer with rev-limit indicator
- Fog lights
- Deep bolstered sport seats with red stitching
- Red backlit gauges
- Exclusive Si badging and trim
- Vehicle Stability Assist (VSA)
- Leather-wrapped steering wheel
- Aluminum shift knob
- Low-profile rear wing spoiler



engineering

	DX	LX	EX/EX-L	Si
Engine Type	In-Line 4-Cylinder	In-Line 4-Cylinder	In-Line 4-Cylinder	In-Line 4-Cylinder
Engine Block/Cylinder Head	Aluminum-Alloy	Aluminum-Alloy	Aluminum-Alloy	Aluminum-Alloy
Displacement (cc)	1799	1799	1799	1998
Horsepower @ rpm (SAE net)	140 @ 6300	140 @ 6300	140 @ 6300	197 @ 7800
Torque (lb-ft @ rpm)	128 @ 4300	128 @ 4300	128 @ 4300	139 @ 6100
Compression Ratio	10.5:1	10.5:1	10.5:1	11.0:1
Valve Train	16-Valve SOHC i-VTEC®	16-Valve SOHC i-VTEC	16-Valve SOHC i-VTEC	16-Valve DOHC i-VTEC
Multi-Point Fuel Injection	•	•	•	•
Drive-by-Wire™ Throttle System	•	•	•	•
CARB Emissions Rating	ULEV-2	ULEV-2	ULEV-2	LEV-2
Direct Ignition System with Immobilizer	•	•	•	•
100K +/- Miles No Scheduled Tune-Ups*	•	•	•	•

transmissions

5-Speed Manual Transmission	•	•	•	Close-Ratio 6-Speed
Compact 5-Speed Automatic Transmission (available)	•	•	•	
Helical Limited-Slip Differential				•

body/suspension/chassis

Unit-Body Construction	•	•	•	•
MacPherson Strut Front Suspension/Multi-Link Rear Suspension	•	•	•	•
Stabilizer Bar (mm, front/rear)	25.4/NA	25.4/11.0	25.4/11.0	28.0 (solid)/17.0
Power-Assisted Rack-and-Pinion Steering	•	•	•	Electric
Steering Wheel Turns, Lock-to-Lock	2.73	2.67	2.67	2.65
Steering Ratio	13.6	13.7	13.7	13.6
Turning Diameter, Curb-to-Curb (ft)	35.4	35.4	35.4	35.6
Power-Assisted Ventilated Front Disc/Rear Drum Brakes (in, front/rear)	10.3/7.9	10.3/7.9		
Power-Assisted Ventilated Front Disc/Solid Rear Disc Brakes (in, front/rear)			10.3/10.2	11.8/10.2
Wheels	15" with Full Covers	16" with Full Covers	16" Alloy	17" Alloy
All-Season Tires	P195/65 R15 89H	P205/55 R16 89H	P205/55 R16 89H	P215/45 R17 87V
Michelin® Pilot® Exalto® PE2™ Summer Tires¹ (available)				215/45 ZR17 91W

interior measurements

Headroom (in, front/rear)	38.0/35.1	38.0/35.1	37.8/34.7	37.8/34.7
Legroom (in, front/rear)	42.6/30.3	42.6/30.3	42.6/30.3	42.6/30.3
Shoulder Room (in, front/rear)	53.9/52.1	53.9/52.1	53.9/52.1	53.9/52.1
Hiproom (in, front/rear)	53.0/49.2	53.0/49.2	53.0/49.2	53.0/49.2
Cargo Volume (cu ft)	11.5	11.5	11.5	11.5
Passenger Volume (cu ft)	83.7	83.7	83.0	83.0
Seating Capacity	5	5	5	5

exterior measurements

Wheelbase (in)	104.3	104.3	104.3	104.3
Length (in)	175.5	175.5	175.5	175.5
Height (in)	55.0	55.0	55.0	55.0
Width (in)	68.9	68.9	68.9	68.9
Track (in, front/rear)	59.0/60.1	59.0/60.1	59.0/60.1	59.0/60.1
Curb Weight (lbs, MT/AT)	2588/2652	2659/2721	2703/2771 (EX) 2714/2784 (EX-L)	2895/NA

EPA mileage estimates²/fuel capacity

5-Speed Manual (City/Highway/Combined)	26/34/29	26/34/29	26/34/29	
6-Speed Manual (City/Highway/Combined)				21/29/24
5-Speed Automatic (City/Highway/Combined)	25/36/29	25/36/29	25/36/29	
Fuel (gal)	13.2	13.2	13.2	13.2
Required Fuel	Regular Unleaded	Regular Unleaded	Regular Unleaded	Premium Unleaded

audio systems

160-Watt AM/FM/CD Audio System with 6 Speakers	•			
350-Watt AM/FM/CD Premium Audio System with 7 Speakers, Including Subwoofer / USB Audio Interface⁵			•	•
MP3/Windows Media® Audio⁴ (WMA) Playback Capability	•	•	•	•
MP3/Auxiliary Jack	•	•	•	•
XM® Radio⁹/Digital Audio-Card Reader			with Navigation	with Navigation
Welcome Screen/CD Text Display Capability	•	•	•	•
Speed-Sensitive Volume Control (SVC)	•	•	•	•



Your dealer's team of trained technicians is at the ready to help keep your Honda in superb shape. All 2009 Honda vehicles – and any Honda Genuine Accessories installed at the time of purchase – are covered by the 3-year/36,000-mile New-Vehicle Limited Warranty.⁹ Plus, Honda cars and trucks are covered by a 5-year/60,000-mile Limited Powertrain Warranty, too.⁹ For more information or assistance, see your Honda dealer or please give us a call at 1-800-33-Honda.

HONDA Financial Services

Whether you wish to buy or lease a Honda vehicle, Honda Financial Services can assist you with the process. Please ask your dealer which lease or purchase plan best suits your needs.

HONDA Care

Honda Care® is an affordable, comprehensive vehicle and travel protection plan backed by Honda reliability, service and parts. Please see your Honda dealer for details.

*Does not apply to fluid and filter changes. May vary with driving conditions. See your owner's manual for more details.

safety	DX	LX	EX/EX-L	Si
3-Point Seat Belts at All Seating Positions	•	•	•	•
Front 3-Point Seat Belts with Automatic Tensioning System	•	•	•	•
Driver's and Front Passenger's Seat-Belt Reminder	•	•	•	•
Dual-Stage, Dual-Threshold Front Airbags (SRS)	•	•	•	•
Front Side Airbags with Passenger-Side Occupant Position Detection System (OPDS)	•	•	•	•
Side Curtain Airbags	•	•	•	•
Driver's and Front Passenger's Active Head Restraints	•	•	•	•
Advanced Compatibility Engineering™ (ACE™) Body Structure	•	•	•	•
Anti-Lock Braking System (ABS) with Electronic Brake Distribution (EBD)	•	•	•	•
Vehicle Stability Assist™ (VSA®) with Traction Control			EX-L	•
Brake Assist			EX-L	•
Tire Pressure Monitoring System® (TPMS)	•	•	•	•
Daytime Running Lights (DRL)	•	•	•	•
Side-Impact Door Beams	•	•	•	•
Outboard Lower Anchors and Tethers for Children (LATCH)	•	•	•	•
Emergency Trunk Release	•	•	•	•
exterior features				
One-Touch Power Moonroof with Tilt Feature			•	•
Integrated Rear-Window Antenna	•	•	•	•
Security System with Remote Entry		•	with Trunk Release	with Trunk Release
Manually Operated Side Mirrors	•			
Body-Colored Power Side Mirrors		•	Heated (EX-L)	•
2-Speed/Intermittent Windshield Wipers	•	•		
Variable Intermittent Windshield Wipers			•	•
Impact-Absorbing Body-Colored Bumpers	•	•	•	•
Fog Lights				•
Multi-Reflector Halogen Headlights	•	•	•	•
Body-Colored Rear Spoiler	Decklid	Decklid	Decklid	Low-Profile Wing Spoiler
Chrome Exhaust Finisher			•	•
Body-Colored Door Handles		•	•	•
comfort & convenience				
Air Conditioning with Air-Filtration System		•	•	•
Honda Satellite-Linked Navigation System™ ¹ with Voice Recognition			Available	Available
Bluetooth® ² HandsFreeLink®			with Navigation	with Navigation
Power Windows	•			
Power Windows with Auto-Up/Down Driver's Window		•	•	•
Power Door Locks with Auto-Lock Feature		•	•	•
Cruise Control		•	•	•
Perforated Leather-Wrapped Steering Wheel			EX-L	•
Aluminum Shift Knob with Leather				•
Textured Aluminum Pedals				•
Steering Wheel-Mounted Controls		Cruise	Cruise/Audio/Navi (available)	Cruise/Audio/Navi (available)
Tilt and Telescopic Steering Column	•	•	•	•
Beverage Holders	Front	Front	Front and Rear	Front and Rear
Center Console with Storage Compartment	•	Sliding Armrest	Sliding Armrest	Sliding Armrest
Door-Pocket Storage Bins	•	•	•	•
Passenger-Side Seatback Pocket			•	•
Driver's and Front Passenger's Vanity Mirrors	•	•	•	•
Ambient Console Lighting			Blue	Red
Map Lights		•	•	•
12-Volt Power Outlet	•	•	•	•
seating				
Leather-Trimmed Seats/Heated Front Seats			EX-L	
Driver's Seat with Manual Height Adjustment	•	•	•	•
Adjustable Head Restraints	•	•	•	•
Fold-Down Rear Seatback	•	•	60/40 Split	60/40 Split
Passenger-Side Walk-In Feature		•	•	•
instrumentation				
Two-Tier Instrument Panel	•	•	•	•
Backlit Gauges	Blue	Blue	Blue	Red
Tachometer	•	•	•	with Rev-Limit Indicator
Digital Odometer and Digital Trip Meters (2)	•	•	•	•
Maintenance Minder™ System	•	•	•	•
Exterior Temperature Indicator			•	•



Get the latest photos, MSRPs, specs, features and more at [honda.com](http://automobiles.honda.com/). You can “build” your Honda, deck it out with accessories – even ask for a dealer price quote and apply for financing.

¹ The Honda Satellite-Linked Navigation System is available on EX and Si models in the United States, except Alaska. See your Honda dealer for details. ² Based on 2009 EPA mileage estimates, reflecting new EPA fuel economy methods beginning with 2008 models. Use for comparison purposes only. Do not compare to models before 2008. Your actual mileage will vary depending on how you drive and maintain your vehicle. ³ The Bluetooth® word mark and logos are owned by the Bluetooth SIG, Inc., and any use of such marks by Honda Motor Co., Ltd., is under license. ⁴ Windows Media® is a trademark or registered trademark of Microsoft Corporation in the United States and/or other countries. ⁵ The USB Audio Interface is used for direct connection to and control of some current digital audio players and other USB devices that contain MP3, WMA or AAC music files. Some USB devices with security software and digital rights-protected files may not work. Please see your dealer for details on compatibility. ⁶ For optimal tire wear and performance, tire pressure should be checked regularly with a gauge. Do not rely solely on the monitor system. See your owner's manual for details. ⁷ Michelin® Pilot® and Exalto are registered trademarks of Michelin North America, Inc. ⁸ Required XM® Radio monthly subscription sold separately after 90-day trial period. Installation costs and other fees and taxes may apply after initial trial period, including a one-time activation fee. All fees and programming subject to change. Subscriptions subject to Customer Agreement available at xmradio.com. XM service only available in the 48 contiguous United States. The XM name is a registered trademark of XM Satellite Radio Inc. ⁹ **3-Year/36,000-Mile Limited Warranty. 5-Year/60,000-Mile Limited Powertrain Warranty.** Ordinary maintenance or adjustments, parts subject to normal wear and replacement, and certain items are excluded. See your Honda dealer for the terms and conditions of the limited warranties. ¹⁰ Kelley Blue Book's kbb.com awarded Honda three Best Resale Value Awards for the 2008 Civic, the 2008 Civic Hybrid and the 2008 Odyssey. www.kbb.com/bvva08. Vehicle's projected resale value is specific to the 2008 model year. Kelley Blue Book is a registered trademark of Kelley Blue Book Co., Inc. ¹¹ Based on 2008 model-year study. IntelliChoice® Inc. www.intellichoice.com. ¹² *Automotive Lease Guide*, 2008 Industry Brand Residual Value Award. **Always use seat belts and appropriate child seats. Children 12 and under are safest when properly restrained in the rear seat.** Specifications, features, illustrations and equipment shown in this brochure are based upon the latest available information at the time of printing. Although descriptions are believed to be correct, accuracy cannot be guaranteed. American Honda Motor Co., Inc., reserves the right to make changes at any time, without notice or obligation, in colors, specifications, accessories, materials and models. Some features mentioned herein are not available in all areas. See your Honda dealer for details. Some vehicles may be shown with optional equipment. Available = Optional. All images contained herein are either owned by American Honda Motor Co., Inc., or used under a valid license. It is a violation of federal law to reproduce these images without express written permission from American Honda Motor Co., Inc., or the individual copyright owner of such images. Honda Financial Services is a DBA of American Honda Finance Corporation. Honda, the H-mark symbol, Honda Care, Honda Satellite-Linked Navigation System, HondaJet, Advanced Compatibility Engineering, ACE, Drive-by-Wire, i-VTEC, Maintenance Minder, Variable Timing Control, VTC, Vehicle Stability Assist and VSA are trademarks of Honda Motor Co., Ltd. © 2008 American Honda Motor Co., Inc.



CIVIC Si SEDAN



CIVIC SEDAN



CIVIC HYBRID



CIVIC Si COUPE



CIVIC COUPE

Over 25 years ago Honda began assembling cars in the United States. Today, almost 4 out of 5 Hondas sold in the U.S. are assembled in North America. Many are developed here, too. And every Honda is a smart value thanks to timeless design, great reliability and extended maintenance intervals. Check out our Best Resale Value Awards¹⁰ from *Kelley Blue Book's* kbb.com, Best Overall Value Awards from IntelliChoice^{®11} and – for the 5th year in a row – *Automotive Lease Guide's* prestigious Industry Brand Residual Value Award.¹²



www.kbb.com

