

2007

Honda

CR-V



SECURE

EAGER

ENTICING

BRAINY

Do you yearn for the thrill of discovery? Then you'll enjoy exploring the all-new 2007 CR-V. Its fresh style is just your first taste of something truly irresistible.

READY

FORWARD

WIDE OPEN

CRAVE



CRAVE.

TOTAL PLEASURE, ZERO GUILT.

Sure, the CR-V has always offered a lot to love. But one look tells you the all-new 2007 CR-V has taken desire to a whole new level. From its alluring sheet metal to advanced technology and available leather seating, this CR-V is everything you want—and everything you need.



CR-V 4WD EX-L shown in Nighthawk Black Pearl.



CR-V 4WD EX-L shown in Whistler Silver Metallic.



BECOME AN INSTANT EXPERT IN GOOD TASTE.

In resculpting the new CR-V's shape, we focused on modern lines, aerodynamics and a meticulous attention to detail. From any angle—up close or at a distance—you'll be captivated every time you view it.



THAT SPACE IN FRONT HAS YOUR NAME ON IT.

The new CR-V is ready to play wherever your life takes you. Whether pulling into a drive-through or up to a club valet, it's equally at home. As you're soon to find out, good impressions are its specialty.



CR-V EX-L shown in Whistler Silver Metallic.



CR-V 4WD EX-L shown in Tango Red Pearl with accessory fog lights.



ENTICING.

RELAX, THERE'S PLENTY OF CR-V TO GO AROUND.

The new CR-V is bound to attract fans of high style, luxury and big roominess. Five adults can soak up the spacious comfort, with lots of cubic space left for cargo*. In the EX-L, soft leather and heated front seats let even more of your senses in on this rich new driving experience.

*Honda reminds you to properly secure items stored in the cargo area.

CR-V EX-L interior shown in Ivory Leather with available Honda Satellite-Linked Navigation System™¹



CR-V EX-L interior shown in Black Leather with available Honda Satellite-Linked Navigation System.¹

FIND YOUR WAY, THE EASY WAY

In EX-L models, the available Honda Satellite-Linked Navigation System¹ features a huge database of maps and over 7 million points of interest. Pick your destination, and turn-by-turn directions and voice prompts guide you.* Voice recognition can control most navigation and audio system functions. And the rearview camera helps you see behind you when in reverse gear.

*Some roads unverified.
See the navigation system owner's manual for more details on coverage.



SATELLITE SOUNDS

EX-L models feature XM[®] Satellite Radio,² beaming down more than 170 channels of digital-quality programming.

IT'S DIGITAL CITY

All CR-V audio systems offer an auxiliary input jack and are MP3- and Windows Media[®] Audio³ (WMA)-compatible.





SMART SYSTEMS

The Maintenance Minder™ system monitors how you drive and alerts you when a specific service is required.

BRING YOUR FAVORITES

Navigation-equipped EX-L models add a digital audio-card reader that lets you play your downloaded music files.



DRIVER-FOCUSED

The illuminated steering wheel-mounted controls help you keep your attention on the road ahead (EX, EX-L).



AIR TO BREATHE

The moonroof is designed to let you enjoy the outdoors while minimizing any wind noise (select models).





WIDE OPEN.

WHEN IN DOUBT, BRING IT.

You like to take your stuff with you. Who doesn't? So when it came to rethinking the CR-V, we built in as much function as fashion. From the easy-opening tailgate to the clever use of space, in fact, the CR-V is a whole new way to go.

EASY ACCESS

The tailgate swings up with the slightest nudge of your fingertips. Store cargo in a variety of ways, thanks to the dual-deck cargo shelf (EX, EX-L) that opens your options.* It can keep things undercover, and it nestles in the floor, entirely out of the way, when it's not needed.†

*Honda reminds you to properly secure items stored in the cargo area.
†Drive responsibly. State laws prohibit distracted driving.



IN REACH

The convenient overhead storage is the perfect place for sunglasses.



TALK BACK

A conversation mirror lets you keep an eye on the rear-seat happenings.

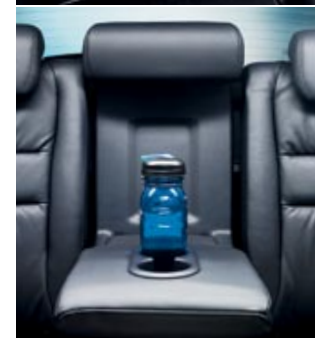


MORE SPACE

Maps, cell phones, mints or even gloves—it'll fit in the dual glove compartments.†

FLIP AND SIP

Rear passengers can flip down and enjoy an armrest with beverage holders.



POWERED UP

A center console (EX-L) offers beverage holders, an MP3/auxiliary input jack and a 12-volt power outlet. On EX-L models with navigation, the center console also holds a 6-disc CD changer.





EXERCISE YOUR OPTIONS

From passengers to possessions, the 2007 CR-V has a voluminous interior flexible enough to handle it all. Many seating configurations are possible thanks to the 60/40 split rear seats, which also slide forward and back to make more legroom. With the rear seats folded forward, there's more than 72 cubic feet of cargo space—a great excuse to bring along more toys!





CR-V 4WD EX shown in Green Tea Metallic with accessory roof rack and ski attachment.

FARTHER IS ALWAYS BETTER.

With more power and surefooted agility, the new CR-V is a thrill to drive. And great mileage will help keep it that way.⁵

i-VTEC, ULEV AND YOU

Just how do our engineers get both power and efficiency out of an engine? It's no secret—it's just science. Like i-VTEC[®], the latest version of our variable valve timing and lift electronic control. It provides both low-rpm torque as well as plenty of horsepower at higher revs. The smart, efficient powerplant also earns the CR-V Ultra-Low-Emission Vehicle (ULEV) designation.

5 SPEEDS, NO CLUTCHING

The new, smooth-shifting 5-speed automatic transmission is tuned to provide both brisk acceleration and relaxed highway cruising. It also features Honda's Grade Logic Control to prevent unwanted upshifts and downshifts in hilly terrain.

4-WHEELED CONFIDENCE

The available Real Time 4WD™ system is just the thing for drives in the snow or wet—or really any slippery surface. If the system detects a loss of traction, it can automatically send power to the rear wheels to help keep you underway.





EX-L

LX

166-hp, 2.4-liter, 16-valve i-VTEC engine • 5-speed automatic transmission • Maintenance Minder system • Available Real Time 4-wheel-drive system • Anti-lock braking system (ABS) with EBD and Brake Assist • Vehicle Stability Assist™ (VSA®) with traction control • Tire Pressure Monitoring System (TPMS) • Front, front side and side curtain airbags with rollover sensor • Driver's and front passenger's active head restraints • Daytime Running Lights (DRL) • 160-watt AM/FM/CD audio system with 4 speakers • MP3/auxiliary input jack • 12-volt power outlets (front and rear) • Air conditioning with air-filtration system • Tilt and telescopic steering column • Conversation mirror with sunglasses holder • Power windows, door locks and side mirrors • Retractable center tray table • Upper and lower glove compartments • Under-seat storage bin • 60/40 split sliding fold and tumble forward rear seats • Ambient console lighting • Remote entry system

EX

Adds to or replaces LX features:
 One-touch power moonroof with tilt feature • Chrome grille and rear license trim • Variable intermittent windshield wipers • Rear privacy glass • Security system • Steering wheel-mounted audio controls • 12-volt power outlets (front/center tray/rear) • Dual-deck cargo shelf • 160-watt AM/FM/6-disc in-dash audio system with 6 speakers • Exterior temperature indicator • 17" alloy wheels

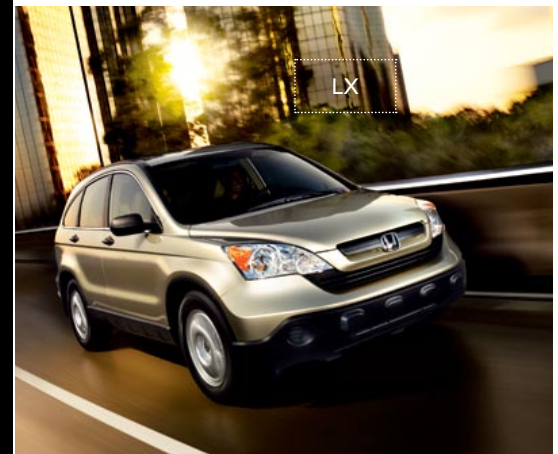
EX-L

Adds to or replaces EX features:
 Leather-trimmed seats and armrests • Heated front seats • Heated side mirrors • Body-colored side mirrors and door handles • XM Satellite Radio² • 12-volt power outlets (front/center console/rear) • Available Honda Satellite-Linked Navigation System¹ with voice recognition and rearview camera • 270-watt AM/FM/6-disc center-console audio system with 7 speakers, including subwoofer (with navigation) • Digital audio-card reader (with navigation)



EX

We'll understand if you find it difficult to choose from among the three hot new CR-V models. But no matter which one you go for—the well-equipped LX, the feature-rich EX or the leather-trimmed EX-L—you're sure to enjoy a whole new kind of driving experience. And since it's a Honda, the fun's going to last a long, long time, too.



LX

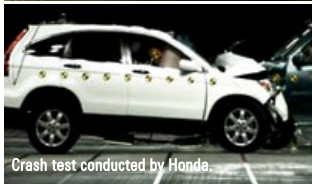


SECURE.

FEEL CONFIDENT IN CR-V'S STRENGTH AND INGENUITY.

In a CR-V, you can drive with the confidence that Honda's Safety for Everyone initiative brings. Every CR-V comes standard with features like a rugged ACE™ body structure, six airbags, anti-lock braking (ABS), Vehicle Stability Assist (VSA) with traction control and a Tire Pressure Monitoring System (TPMS). Our emphasis on safety can help you enjoy every ride in your new Honda.

CR-V EX-L shown in Ivory Leather with available Honda Satellite-Linked Navigation System.
Front airbags inflate and deflate in a fraction of a second.



Crash test conducted by Honda.

CRASH COURSES

We learn by testing in some of the world's most sophisticated labs. The knowledge gained is seen in how we engineer our vehicles, with front and rear crush zones that help absorb crash energy before it can reach the strong passenger compartment.

CHILD-MINDED

The CR-V's standard Lower Anchors and Tethers for Children (LATCH) system makes it easier to install compatible child seats.

SIX AIRBAGS

A full array of airbags is at the ready to help protect you and your passengers in sufficient impacts. Dual-stage, dual-threshold front airbags, front side airbags and side-curtain airbags are all standard equipment in every CR-V.*

SAFETY ON DEMAND

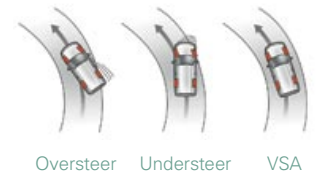
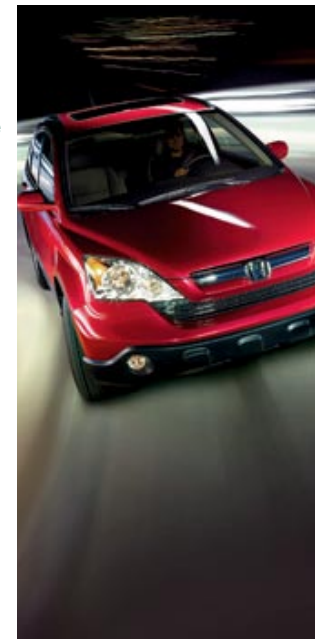
The passenger's front side airbag features an Occupant Position Detection System (OPDS) that's been designed to prevent the airbag from deploying if a child or small-statured person is in the path of deployment.

ADVANCED BRAKING

The 4-wheel anti-lock brakes also feature Brake Assist, which helps apply full braking in some emergency situations. Electronic Brake Distribution (EBD) helps balance braking forces depending upon dynamic loading.

VEHICLE STABILITY ASSIST

VSA helps sense oversteer and understeer, and then can adjust brake pressure at each wheel and reduce engine power to help restore the driver's intended path of travel.



ACE BODY STRUCTURE

Honda's Advanced Compatibility Engineering™ (ACE) body structure increases impact compatibility with different-sized vehicles. In front-end collisions, it helps to redirect crash energy around the rigid passenger compartment, enhancing protection.



ACTIVE HEAD RESTRAINTS

The CR-V now features active head restraints in the front seats, which can deploy in a sufficient rear impact and help reduce head and neck injury.



*Honda reminds you and your passengers to always buckle up. Children 12 and under are safest when properly restrained in the rear seat.

SAFETY FOR EVERYONE.

Through a comprehensive and evolving approach to vehicle safety, Honda seeks to provide a high level of occupant and pedestrian protection in our cars and trucks, regardless of size or price, as well as increased crash compatibility with other vehicles.



FROM TINY TO MIGHTY.

Counting our generators, motorcycles, watercraft, outboard motors, tillers, lawnmowers, pumps, cars, trucks and more, Honda has become the largest manufacturer of engines in the world.

28,000 AMERICAN ASSOCIATES PITCH IN.

Honda has assembled cars here since 1982. Today, nearly 4 of 5 Honda vehicles sold in the U.S. are assembled in North America—with the help of 530 U.S. suppliers. And many of our new models are designed and engineered in the United States as well.

WE'RE ALWAYS LOOKING AHEAD.

Meet ASIMO™, the world's most advanced and capable humanoid robot. A prime example of pure Honda ingenuity, this remarkable machine could one day help improve the lives of many people who have limited physical abilities.



INNOVATIVE.

DREAMS ARE OUR DRAWING BOARD.

Soichiro Honda founded the Honda Motor Co. in 1948 to help people get around. His core values have shaped what Honda is today. Listening to people and understanding their needs has always been first. Safety, reliability, environmental responsibility and driving fun are must-haves. And the power of ingenious thinking can make great things possible.



RULE THE WAVES ON A HONDA.

With our highly regarded AquaTrax® personal watercraft and our lineup of outboards from 2 to 225 hp, Honda gives you a wide variety of ways to enjoy the wet stuff.



THINGS ARE REALLY TAKING OFF.

True to the challenging spirit of Honda, our HondaJet™ delivers real innovation in aviation. This fast, fuel-efficient aircraft is unusually spacious inside, too—like all Honda vehicles.

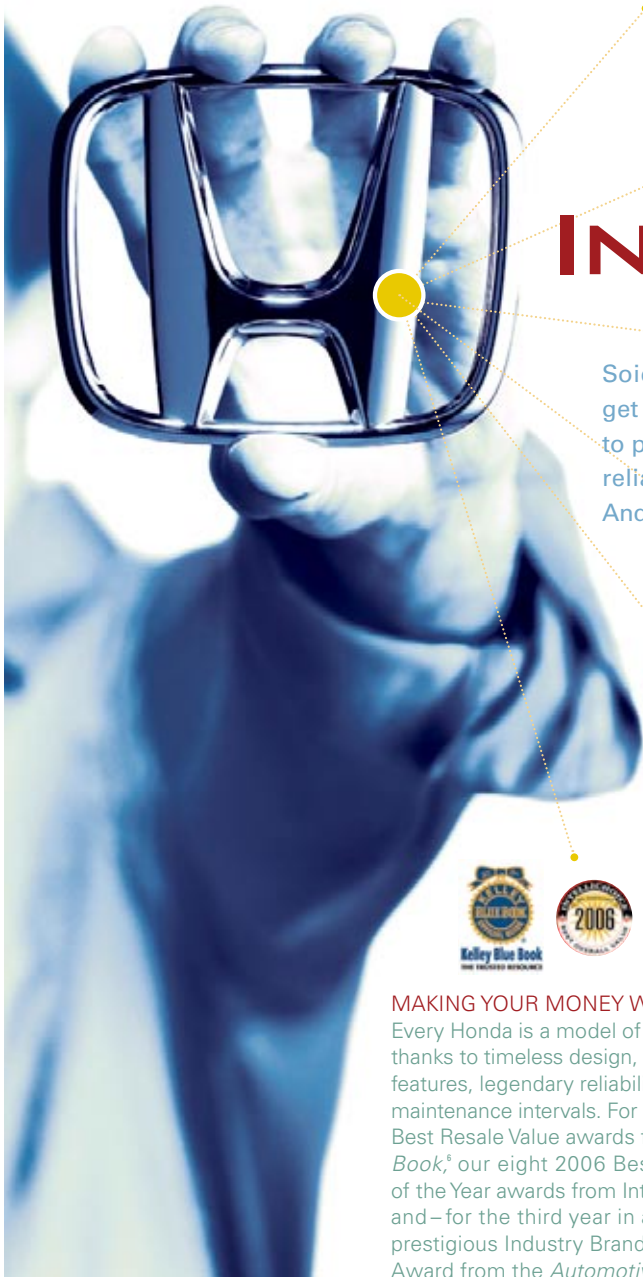


Environmentology

The Honda legacy of innovation is unmatched in the vehicle industry. We have long acted on our spirited commitment to creating environmentally responsible technology, yielding world-changing advances in fuel economy, low emissions and leading-edge hybrids. And as always, our attention is focused on the future. In fact, a Southern California family is already driving a limited-production Honda FCX hydrogen fuel-cell car in the Los Angeles area on a daily basis. It's all part of Honda's Environmentology.™

MAKING YOUR MONEY WORK HARDER.

Every Honda is a model of smart value, thanks to timeless design, loads of standard features, legendary reliability and extended maintenance intervals. For proof, see our Best Resale Value awards from *Kelley Blue Book*,[®] our eight 2006 Best Overall Value of the Year awards from IntelliChoice[®] and—for the third year in a row—the prestigious Industry Brand Residual Value Award from the *Automotive Lease Guide*.[®]



Engineering	LX	EX	EX-L
Engine Type	In-Line 4-Cylinder	In-Line 4-Cylinder	In-Line 4-Cylinder
Engine Block/Cylinder Head	Aluminum-Alloy	Aluminum-Alloy	Aluminum-Alloy
Displacement (cc)	2354	2354	2354
Horsepower @ rpm (SAE net, Rev 8/04)*	166 @ 5800	166 @ 5800	166 @ 5800
Torque (lb.-ft. @ rpm)*	161 @ 4200	161 @ 4200	161 @ 4200
Valve Train	16-Valve DOHC i-VTEC*	16-Valve DOHC i-VTEC	16-Valve DOHC i-VTEC
Multi-Point Fuel Injection	•	•	•
Drive-by-Wire™ Throttle System	•	•	•
Real Time 4-Wheel Drive™	Available	Available	Available
CARB Emissions Rating	ULEV-2	ULEV-2	ULEV-2
Direct Ignition System with Immobilizer	•	•	•
100,000 Miles-or-More Tune-Up Interval†	•	•	•
Transmission			
5-Speed Automatic Transmission	•	•	•
Body/Suspension/Chassis			
Unit-Body Construction	•	•	•
MacPherson Strut Front Suspension	•	•	•
Multi-Link Rear Suspension	•	•	•
Stabilizer Bar (mm, front/rear)	20/19	20/19	20/19
Variable Power-Assisted Rack-and-Pinion Steering	•	•	•
Steering Wheel Turns, Lock-to-Lock	2.96	2.96	2.96
Turning Diameter, Curb-to-Curb (ft.)	37.8	37.8	37.8
Power-Assisted Ventilated Front Disc/ Solid Rear Disc Brakes (in., front/rear)	11.7/12.0	11.7/12.0	11.7/12.0
Wheels	17" Styled Steel	17" Alloy	17" Alloy
All-Season Tires	225/65 R17 102T	225/65 R17 102T	225/65 R17 102T
Exterior Measurements			
Wheelbase (in.)	103.1	103.1	103.1
Length (in.)	177.9	177.9	177.9
Height (in.)	66.1	66.1	66.1
Width (in.)	71.6	71.6	71.6
Track (in.)	61.6	61.6	61.6
Ground Clearance (in., unladen)	7.3	7.3	7.3
Curb Weight (lbs., 2WD/4WD)	3389/3501	3415/3532	3433/3549
Weight Distribution (% front/rear 2WD (4WD))	58/42 (57/43)	58/42 (57/43)	58/42 (57/43)
Towing Capacity ³ (lbs.)	1500	1500	1500
Interior Measurements			
Headroom (in., front/rear)	40.9/38.6	38.9/38.5	38.9/38.5
Legroom (in., front/rear)	41.3/38.5	41.3/38.5	41.3/38.5
Shoulder Room (in., front/rear)	56.9/56.0	56.9/56.0	56.9/56.0
Hiproom (in., front/rear)	55.9/54.6	55.9/54.6	55.9/54.6
Cargo Volume (cu. ft., rear seat up/down)	35.7/72.9	35.7/72.9	35.7/72.9
Passenger Volume (cu. ft.)	103.8	100.9	100.9
Seating Capacity	5	5	5
EPA Mileage Estimates ² /Capacities			
5-Speed Automatic (City/Highway) 2WD (4WD)	23/30 (22/28)	23/30 (22/28)	23/30 (22/28)
Crankcase (qt.)	5.3	5.3	5.3
Coolant System (qt.)	7.5	7.5	7.5
Fuel (gal.)	15.3	15.3	15.3
Required Fuel	Regular Unleaded	Regular Unleaded	Regular Unleaded
Seating			
Reclining Front Bucket Seats with Adjustable Head Restraints	•	•	•
Driver's Seat with Manual Height Adjustment	•	•	•
Leather-Trimmed Seats and Armrests	•	•	•
Heated Front Seats	•	•	•
60/40 Split Sliding Fold and Tumble Forward Rear Seats	•	•	•
40/20/40 Reclining Rear Seatbacks w/Center Pass-Through	•	•	•

Audio Systems	LX	EX	EX-L
160-Watt AM/FM/CD Audio System with 4 Speakers	•		
160-Watt AM/FM/6-Disc In-Dash Audio System with 6 Speakers		•	•
270-Watt AM/FM/6-Disc Center-Console Audio System with 7 Speakers, Including Subwoofer			Navigation Models
MP3/Windows Media® Audio ³ (WMA) Playback Capability	•	•	•
MP3/Auxiliary Input Jack	•	•	•
XM® Satellite Radio ²		•	•
Digital Audio-Card Reader			Navigation Models
CD Text Display Capability	•	•	•
Speed-Sensitive Volume Control (SVC)	•	•	•
Instrumentation			
White and Blue Backlit Gauges	•	•	•
Digital Odometer and Digital Trip Meters (2)	•	•	•
Maintenance Minder™ System	•	•	•
Exterior Temperature Indicator	•	•	•
Door- /Tailgate-Open Indicator	•	•	•
Average Fuel Consumption Indicator	•	•	•
Miles-to-Empty Indicator	•	•	•
Low-Oil Pressure Indicator	•	•	•
Safety			
3-Point Seat Belts at All Seating Positions	•	•	•
Front 3-Point Seat Belts with Automatic Tensioning System	•	•	•
Adjustable Front Seat Belt Anchors	•	•	•
Dual-Stage, Dual-Threshold Front Airbags (SRS)	•	•	•
Front Side Airbags with Passenger-Side Occupant Position Detection System (OPDS)	•	•	•
Side Curtain Airbags with Rollover Sensor	•	•	•
Driver's and Front Passenger's Active Head Restraints	•	•	•
Advanced Compatibility Engineering™ (ACE™) Body Structure	•	•	•
Anti-Lock Braking System (ABS)	•	•	•
Electronic Brake Distribution (EBD)	•	•	•
Vehicle Stability Assist™ (VSA™) with Traction Control	•	•	•
Brake Assist	•	•	•
Tire Pressure Monitoring System (TPMS)	•	•	•
Daytime Running Lights (DRL)	•	•	•
Side-Impact Door Beams	•	•	•
Lower Anchors and Tethers for Children (LATCH)	•	•	•
Child-Proof Rear Door Locks	•	•	•
Immobilizer Theft-Deterrent System	•	•	•
Exterior Features			
One-Touch Power Moonroof with Tilt Feature		•	•
Remote Entry System	•	•	•
Chrome Grille	Black	•	•
Chrome Window Trim	•	•	•
Chrome Rear License Trim	•	•	•
Multi-Reflector Halogen Headlights	•	•	•
2-Speed/Intermittent Windshield Wipers	•	•	•
Variable Intermittent Windshield Wipers		•	•
Intermittent Rear Window Wiper/Washer	•	•	•
Heat-Rejecting Green-Tinted Glass	•	•	•
Folding Power Side Mirrors	•	•	Body-Colored/Heated
Full-Length Brake Lights	•	•	•
Body-Colored Door Handles		•	•
Rear Privacy Glass		•	•
Security System		•	•

*Horsepower and torque calculations reflect SAE J1349 procedures revised August, 2004. †Does not apply to fluid and filter changes. Exact mileage is determined by actual driving conditions. See your owner's manual for more details.

Comfort & Convenience	LX	EX	EX-L
Air Conditioning with Air-Filtration System	•	•	•
Honda Satellite-Linked Navigation System™ ¹ with Voice Recognition and Rearview Camera			Available
Power Windows with Auto-Up/Down Driver's Window	•	•	•
Power Door and Tailgate Locks	•	•	•
Cruise Control	•	•	•
Tilt and Telescopic Steering Column	•	•	•
Leather-Wrapped Steering Wheel			•
Steering Wheel-Mounted Audio Controls		•	•
Retractable Center Tray Table	•	•	
Center Console			•
Driver's and Front Passenger's Vanity Mirrors	•	•	•
Conversation Mirror with Sunglasses Holder	•	•	•
Instrument Panel-Mounted Shifter	•	•	Leather-Wrapped
Beverage Holders, Front and Rear (8 total)	•	•	•
12-Volt Power Outlets	Front/Rear	Front/Center Tray/Rear	Front/Center Console/Rear
Upper and Lower Glove Compartments	•	•	•
Under Seat Storage Bin	•	•	Without Navigation
Door-Pocket Storage Bins	•	•	•
Map Lights	•	•	•
Ambient Console Lighting	•	•	•
Driver-Side Garment Hook	•	•	•
Remote Fuel Filler Door Release	•	•	•
Rear Window Defroster	•	•	•
Rear-Seat Heater Ducts	•	•	•
Floor Mats	•	•	•
Dual-Deck Cargo Shelf		•	•
Cargo Area Tie-Down Anchors (4 total)	•	•	•
Cargo Area Light	•	•	•



LX CONVENIENCE PACKAGE

Give your CR-V LX even greater style and versatility with a set of 17" alloy wheels, a handy rear armrest tray and a cargo cover to help keep your valuables out of sight.



EX SPORT PACKAGE

Choose from a wide variety of Genuine Honda Accessories. With this capability-enhancing package for your CR-V EX, you get a roof rack, running boards and fog lights.

¹The Honda Satellite-Linked Navigation System is available only in the 48 contiguous United States on EX-L models. ²XM® Satellite Radio requires XM subscription, available at xmradio.com. Trial subscription provided free for first three months. All fees and programming subject to change. See your dealer for details. XM service only available in the 48 contiguous United States. The XM name is a registered trademark of XM Satellite Radio Inc. ³Windows Media™ is a trademark or registered trademark of Microsoft Corporation in the United States and/or other countries. ⁴Carrying too much cargo or improperly storing it can affect the handling, stability and operation of this vehicle. Before carrying any cargo, be sure to consult the owner's manual for load limits and loading guidelines. ⁵Based on 2007 EPA mileage estimates. Use for comparison purposes only. Actual mileage may vary. ⁶Kelley Blue Book's kbb.com awarded Honda two Best Resale Value Awards for the 2006 Odyssey and 2006 Accord Hybrid. www.kbb.com/media. ⁷Based on 2006 model-year study. IntelliChoice,® Inc. www.intellichoice.com ⁸Automotive Lease Guide, 2006 Residual Value Awards. ⁹Towing requires the addition of the Honda accessory trailer hitch and hitch ball. Refer to the owner's manual for additional towing information. ¹⁰**3-Year/36,000-Mile Limited Warranty, 5-Year/60,000-Mile Limited Powertrain Warranty.** Ordinary maintenance or adjustments, parts subject to normal wear and replacement, and certain items are excluded. See your Honda dealer for the terms and conditions of the limited warranties. **Always use seat belts and appropriate child seats. Children 12 and under are safest when properly restrained in the rear seat.** Specifications, features, illustrations and equipment shown in this brochure are based upon latest available information at the time of printing. Although descriptions are believed to be correct, accuracy cannot be guaranteed. American Honda Motor Co., Inc., reserves the right to make changes at any time, without notice or obligation, in colors, specifications, accessories, materials and models. Some features mentioned herein are not available in all areas. See your Honda dealer for details. Some vehicles may be shown with optional equipment. Available = Optional. NA = Not available. All images contained herein are either owned by American Honda Motor Co., Inc., or used under a valid license. It is a violation of federal law to reproduce these images without express written permission from American Honda Motor Co., Inc., or the individual copyright owner of such images. Honda Financial Services is a DBA of American Honda Finance Corporation. Honda, the H-mark symbol, Honda Care, Honda Satellite-Linked Navigation System, HondaJet, Advanced Compatibility Engineering, ACE, AquaTrax, ASIMO, Drive-by-Wire, Environmentology, i-VTEC, Maintenance Minder, Real Time 4-Wheel Drive, Vehicle Stability Assist and VSA are trademarks of Honda Motor Co., Ltd. ©2006 American Honda Motor Co., Inc.

HONDA

Financial Services

Whether you wish to buy or lease a Honda vehicle, Honda Financial Services can assist you with the process. Please ask your dealer which lease or purchase plan best suits your needs.

Honda Care® is an affordable, comprehensive vehicle and travel protection plan backed by Honda reliability, service and parts. Please see your Honda dealer for details.



Your dealer's team of trained technicians is at the ready to help keep your Honda in superb shape. All 2007 Honda vehicles—and any Genuine Honda Accessories installed at the time of purchase—are covered by the 3-year/36,000-mile New-Vehicle Limited Warranty.¹⁰ Plus, Honda cars and trucks are covered by a 5-year/60,000-mile Limited Powertrain Warranty, too.¹⁰ For more information or assistance, see your Honda dealer or please give us a call at 1-800-33-Honda.