

2009 Honda Civic



Sedan / Si Sedan / Hybrid

HANDS + WHEEL FOOT + PEDAL TIRES + ROAD





HEART + POUND

Take your daily routine and add rousing performance. Add keen-edged styling. Add a generous dose of high tech. And the newly styled 2009 Civic Sedan also adds two new models—the DX Value Package and the LX-S—so you'll have no problem finding the Civic of your dreams. Do the math: Civic = fun.

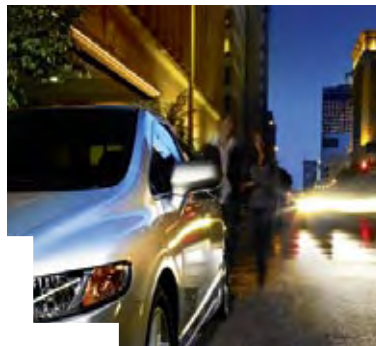
Civic EX Sedan shown in Polished Metal Metallic.

INCREASE

YOUR DAILY QUOTA OF THRILLS

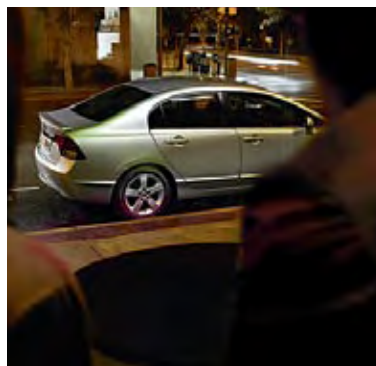


Civic LX-S Sedan shown in Alabaster Silver Metallic.



Nothing gets the blood pumping quite like a big serving of i-VTEC® every morning. Honda's signature technology gives you plenty of torque off the line as well as horsepower to spare down the road. The Drive-by-Wire™ throttle system improves response as well as fuel economy! Power flows through a precise 5-speed manual transmission, or you can take intimate control with an available 5-speed automatic.

The Civic's sporty feel is the product of its sophisticated suspension system and power-assisted rack-and-pinion steering. Both have been engineered for quick, precise response and a refined ride quality. Confident stopping is provided on DX and LX models by front disc and rear drum brakes. EX models and above sport disc brakes at all four corners.





Civic EX Sedan shown in Tango Red Pearl.

12 HOURS

UNTIL YOU HAVE TO BE AT YOUR DESK IN THE MORNING

The Civic helps you connect with more than just the road. On select models, the available Honda Satellite-Linked Navigation System™ with voice recognition provides not only maps and directions, but also listings of over 7,000,000 points of interest like ATMs, restaurants and cultural venues.* It also features Bluetooth® HandsFreeLink® so you can dial ahead through your Bluetooth-compatible cell phone.†

*Some roads unverified. See the navigation system owner's manual for more details on coverage.

†Drive responsibly. Some state laws prohibit the operation of handheld electronic devices while operating a vehicle. For safety reasons, always launch your audio application or perform any other operation on your phone or audio device only when the vehicle is safely parked. Two Sheds featured courtesy of Filter U.S. Recordings © and © 2008.

A high-angle, wide shot of the front interior of a Honda Civic EX-L Sedan. The car features beige leather upholstery on the front and rear seats, which have a quilted pattern. The dashboard, center console, and steering wheel are also finished in beige leather. A navigation screen is visible on the center console. The text "TAILORED" is overlaid in large, white, outlined letters, with "TO STIMULATE YOUR EYES + EARS + HANDS" in smaller, white, outlined letters below it.

TAILORED

TO STIMULATE YOUR EYES + EARS + HANDS

Civic EX-L Sedan shown with Beige Leather and available Honda Satellite-Linked Navigation System.²

The Civic cabin is designed to be a full sensory experience. Select EX and Hybrid models include a leather-trimmed interior and heated front seats. They also feature a leather-wrapped steering wheel, which is also found on the new LX-S. Rear-seat passengers won't feel neglected with their comfortably wide seats and flat rear floor. The fold-down rear seatback also expands your cargo-carrying capability,* and it's split 60/40 in EX and Si models.

*Honda reminds you to properly secure items stored in the cargo area.



ERGONOMIC DESIGN

With the new three-spoke steering wheel's tilt and telescoping adjustability, you can easily find a comfortable position. LX and above feature steering wheel-mounted cruise-control switches. EX, Hybrid and Si models also put audio-system controls close at hand.



AUDIO SYSTEMS

On DX-VP and above, the AM/FM/CD audio system has MP3/Windows Media® Audio⁴ (WMA) playback capability and an MP3/auxiliary input jack. EX, Hybrid and Si add more speakers, including a subwoofer in the Si. Navigation-equipped models add XM® Radio.⁵



USB AUDIO INTERFACE⁶

New for 2009, EX, Hybrid and Si models include Honda's USB Audio Interface,⁶ giving you greater access to your digital music files. Just plug in your compatible music player and the system displays song information and lets you use the vehicle's audio controls.

Drive responsibly. Some state laws prohibit the operation of handheld electronic devices while operating a vehicle. For safety reasons, always launch your audio application or perform any other operation on your phone or audio device only when the vehicle is safely parked.

iPod is a registered trademark of Apple Computer, Inc., registered in the U.S. and other countries. iPod not included.

A silver Honda Civic Si Sedan is shown from a front-three-quarter view, driving through a tunnel. The car's headlights are on, and the tunnel walls are lined with bright, glowing light strips that create a sense of speed and motion. The car is positioned on the left side of the frame, moving towards the right.

Si

WARNING:

CONTENTS UNDER PRESSURE

Add the letters Si to the Civic Sedan and you add exponentially to the level of fun. With its responsive 197-horsepower engine, low stance, 17-inch alloy wheels and close-ratio 6-speed manual transmission, the Si gives you ultimate Civic performance.

Civic Si Sedan shown in Alabaster Silver Metallic.

Si

K20 197hp +
8000rpm 11:1



Civic Si Sedan shown in Dyno Blue Pearl.



6-SPEED MANUAL TRANSMISSION

The performance-oriented close-ratio gearing delivers quick, precise shift action. Special features include carbon-faced single cone synchronizers on fifth and sixth gears for enhanced shift feel and a low-ratio sixth gear for quiet, fuel-efficient¹ cruising.

SPORT-TUNED SUSPENSION

The Civic's standard MacPherson strut front and multi-link rear suspension setup gets the full Si treatment with firmer spring rates and damping as well as beefier front and rear stabilizer bars for taut handling and razor-sharp cornering.

LIMITED-SLIP DIFFERENTIAL

Usually found only on high-performance and racing cars, the Civic Si's helical limited-slip differential delivers torque to the wheel with the most traction for enhanced steering control and response as well as confident acceleration through the curves.

197-HP, 2.0-LITER, DOHC i-VTEC ENGINE

Adrenaline spikes come courtesy of the Si's K20Z3 engine. A marvel of efficiency, it produces an incredibly high horsepower-per-liter ratio. In addition to the performance benefits of i-VTEC, the engine also boasts a high 11:1 compression ratio, giving you more power out of every stroke. Balance shafts and lightweight pistons make for smooth revving all the way up to an 8,000-rpm redline. Intake and exhaust are unobtrusive when cruising at highway speed, but produce an aggressive, sporty sound at full throttle.



Civic Si Sedan shown with Black Fabric and available Honda Satellite-Linked Navigation System.²

TRANSFORMS

ERRANDS INTO ADVENTURES

How you see the world depends on your vantage point. Seated inside the cockpit of the Civic Si, every outing becomes a chance to sharpen your driving skills. The special red-stitched seats are deeply bolstered to hold you in place during spirited driving. Other contact points are likewise designed for performance. The steering wheel is wrapped in leather for a positive, tactile feel. The pedals are drilled aluminum. Even the red ambient glow of the gauge cluster is a signal to the enthusiast that the Si was born to run.



Civic Hybrid shown in Magnetic Pearl.

POSITIVE⁺CHANGE

Being environmentally responsible has never been easier. The Civic Hybrid's sophisticated gasoline-electric powertrain helps you save on fuel—with up to 45 mpg¹ on the highway. It's also received Advanced Technology Partial Zero-Emission Vehicle² (AT-PZEV) status—the most stringent emissions standard yet achieved by a gasoline-powered vehicle in the U.S. But don't think of it as a move to austerity. Interior amenities include automatic climate control, a powerful 6-speaker audio system with Honda's USB Audio Interface³ and power windows, mirrors and door locks. And new for 2009, you can get a Civic Hybrid with an available leather-trimmed interior, leather-wrapped steering wheel and heated front seats and side mirrors.

HYBRID



PURE POWER

The Civic Hybrid employs Honda's Integrated Motor Assist IMA® System, which pairs a super-efficient 1.3-liter gasoline engine with a lightweight, high-output electric motor. The two work together seamlessly, so it feels just like a normal, responsive Civic. The IMA System's recharging function is completely self-sufficient. The vehicle's powertrain automatically recharges the onboard battery pack so it never needs to be plugged in.

The Civic Hybrid's 4-cylinder engine features torque-enhancing i-VTEC and a dual-point sequential ignition system that fires two spark plugs per cylinder. The engine is mated with a powerful DC electric motor that's less than 2.5" wide. Power for the motor is stored in a battery pack located behind the rear seat. At only 8" thick, it leaves plenty of room in the trunk. To assure its long life, the IMA battery pack comes with an 8-year/80,000-mile limited battery warranty.*



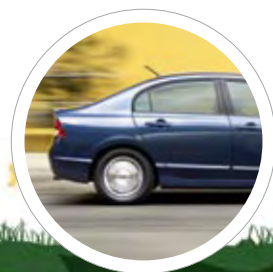
STARTING

The Civic Hybrid's engine usually uses the IMA System's motor to start. If the IMA battery-pack charge is too low or if it's very cold outside, the system has a separate battery and starter motor to back it up.



ACCELERATION

Any time the engine needs a burst of power—such as while accelerating, passing or climbing up an incline—the IMA System's electric motor can add its torque automatically to the engine's to give you instant, ample response.



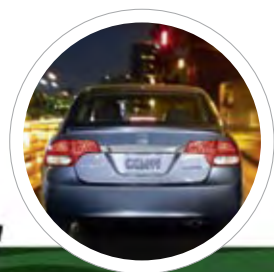
CITY CRUISING

At steady speeds below 35 mph on level roads and under light throttle, fuel injection can cease and the car can be propelled solely by the electric motor. Engine intake and exhaust valves stop opening to help reduce drag.



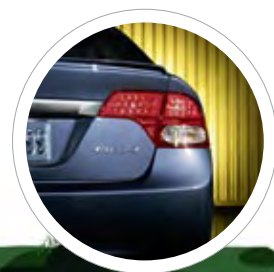
HIGHWAY

At higher cruising speeds, the vehicle's efficient gasoline engine provides the motive power. Low-friction engineering lets it provide plenty of horsepower while still sipping fuel.



BRAKING

The Hybrid's IMA System can tap into the kinetic energy produced by the vehicle when you brake. The system's motor turns itself into a generator, helping to slow the car while it builds up the energy stored in the batteries.



AT A STOP

Under most conditions, the gasoline engine automatically shuts off when you stop. Lift your foot off the brake, and the engine restarts automatically. The vehicle's climate control system continues to operate while the engine is off.

SAFETY

IS THE BIGGEST PLUS OF ALL

With its impressive list of standard safety features, the Civic is a prime example of Honda's commitment to providing a high level of occupant protection. In fact, the Civic Sedan received a 5-star frontal crash-test rating from NHTSA.*



Front airbags inflate and deflate in a fraction of a second.

ADVANCED AIRBAGS

Every Civic features dual-stage, dual-threshold front airbags, front side airbags and side curtain airbags.† The passenger's front side airbag has an Occupant Position Detection System (OPDS) to prevent it from deploying if a child or small-statured person is detected in the airbag's path of deployment.



ADVANCED COMPATIBILITY ENGINEERING™ (ACE™)

This sophisticated body structure increases the Civic's impact compatibility with different-sized vehicles. In frontal collisions, it helps to redirect crash energy around the rigid passenger compartment, enhancing protection.

ABS AND EBD

Along with an anti-lock braking system (ABS), Civic features Electronic Brake Distribution (EBD), which distributes braking force to each wheel based on dynamic loading of the vehicle. The Civic Hybrid, EX-L and Si add Brake Assist, which can sense emergency braking and automatically apply full brake force.

ACTIVE FRONT HEAD RESTRAINTS

In a sufficient rear impact, this system moves the head restraint upward and forward to reduce the gap between the occupant's head and the seat head restraint. This lessens impact forces on the head, neck and spine, helping to reduce the likelihood of head injuries.

VEHICLE STABILITY ASSIST™ (VSA®)

Standard on EX-L, Hybrid and Si, this system monitors such things as individual wheel speed, steering angle and lateral g-force. If it detects oversteer or understeer it can brake individual wheels and/or reduce engine speed to help restore you to your intended path.

ADVANCED SEAT BELTS

In the event of a moderate to severe impact, the front seat-belt automatic tensioning system instantly tightens the harnesses to help hold the driver and front passenger in place. Load limiters allow the seat belts to give a little, reducing the load on the occupant's chest.

TIRE PRESSURE MONITORING SYSTEM® (TPMS)

The Civic's standard Tire Pressure Monitoring System® (TPMS) continually monitors the pressure in all four tires, and alerts the driver through a visual indicator located on the dash if the air pressure in any of the tires becomes significantly low.

IMPACT PROTECTION

Ingenious engineering and the liberal use of high-tensile steel throughout the Civic Sedan's body structure help create a strong, rigid passenger safety cell. In addition, all four doors feature side-impact beams designed to help prevent intrusion into the passenger space.

*Government star ratings are part of the National Highway Traffic Safety Administration's (NHTSA's) New Car Assessment Program (www.safercar.gov).

†Honda reminds you and your passengers to always buckle up. Children 12 and under are safest when properly restrained in the rear seat.



"WE ONLY HAVE ONE
FUTURE,
AND IT WILL BE MADE OF
OUR DREAMS."

—SOICHIRO HONDA

A dream is a view of the



world not as it is, but as it could be. For 60

years, Honda has encouraged its associates to aim beyond what is currently possible. All for the purpose of progressing human mobility. This spirit has



resulted in advances in environmental technology, like the hydrogen fuel cell FCX

Clarity, that brings us closer to a future filled with blue skies. It guides us as we

strive to exceed government safety regulations and has led to industry-changing

innovations on the ground, in the water, and, with the HondaJet™, in the air. And it pushes us to use premier race circuits as testing grounds for our



ideas. Moving forward, our minds are open to new ideas, no matter where they come from.

Because you never know what will be until you discover what can be. dreams.honda.com

Civic EX Sedan shown in Crystal Black Pearl.

ENGINEERING	DX/DX-VP	LX/LX-S	EX/EX-L	HYBRID	Si
Engine Type	In-Line 4-Cylinder	In-Line 4-Cylinder	In-Line 4-Cylinder	In-Line 4-Cylinder*	In-Line 4-Cylinder
Engine Block/Cylinder Head	Aluminum-Alloy	Aluminum-Alloy	Aluminum-Alloy	Aluminum-Alloy	Aluminum-Alloy
Displacement (cc)	1799	1799	1799	1339	1998
Horsepower @ rpm (SAE net)	140 @ 6300	140 @ 6300	140 @ 6300	110 @ 6000	197 @ 7800
Torque (lb-ft @ rpm)	128 @ 4300	128 @ 4300	128 @ 4300	123 @ 1000 – 2500	139 @ 6100
Compression Ratio	10.5:1	10.5:1	10.5:1	10.8:1	11.0:1
Valve Train	16-Valve SOHC i-VTEC®	16-Valve SOHC i-VTEC	16-Valve SOHC i-VTEC	8-Valve SOHC i-VTEC	16-Valve DOHC i-VTEC
Drive-by-Wire™ Throttle System	•	•	•	•	•
CARB Emissions Rating	ULEV-2	ULEV-2	ULEV-2	AT-PZEV [†]	LEV-2
Direct Ignition System with Immobilizer	•	•	•	•	•
100K +/- Miles No Scheduled Tune-Ups†	•	•	•	•	•
Permanent Magnet Electric Motor				•	
Nickel-Metal Hydride (Ni-MH) Battery				•	
Output (volts)				158	

TRANSMISSIONS					
5-Speed Manual Transmission	•	•	•		
Close-Ratio 6-Speed Manual Transmission					•
Compact 5-Speed Automatic Transmission (available)	•	•	•		
Continuously Variable Transmission (CVT)				•	
Helical Limited-Slip Differential					•

BODY/SUSPENSION/CHASSIS					
Unit-Body Construction	•	•	•	•	•
MacPherson Strut Front Suspension	•	•	•	•	•
Multi-Link Rear Suspension	•	•	•	•	•
Stabilizer Bar (mm, front/rear)	24.2/10.0	24.2/10.0	24.2/10.0	24.2/12.0	27.0 (solid)/17.0
Power-Assisted Rack-and-Pinion Steering	•	•	•	Electric	Electric
Steering Wheel Turns, Lock-to-Lock	2.70	2.70	2.70	2.71	2.65
Turning Diameter, Curb-to-Curb (ft)	34.8	35.4	35.4	34.8	35.4
Power-Assisted Ventilated Front Disc/ Rear Drum Brakes (in, front/rear)	10.3/7.9	10.3/7.9			
Power-Assisted Ventilated Front Disc/ Solid Rear Disc Brakes (in, front/rear)			10.3/10.2	10.3/10.2	11.8/10.2
Wheels	15" with Full Covers	16" with Full Covers/16" Alloys	16" Alloys	15" Lightweight Alloys	17" Alloys
All-Season Tires	P195/65 R15 89H	P205/55 R16 89H	P205/55 R16 89H	P195/65 R15 89S	P215/45 R17 87V
Michelin® Pilot® Exalto® PE2™ Summer Tires ¹⁰					215/45 ZR17 91W (available)

INTERIOR MEASUREMENTS					
Headroom (in, front/rear)	39.4/37.4	39.4/37.4	38.1/36.7	39.4/37.4	38.1/36.7
Legroom (in, front/rear)	42.2/34.6	42.2/34.6	42.2/34.6	42.2/34.6	42.2/34.6
Shoulder Room (in, front/rear)	53.7/52.4	53.7/52.4	53.6/52.3	53.6/52.3	53.6/52.3
Hiproom (in, front/rear)	51.9/51.0	51.9/51.0	51.9/51.0	51.9/51.0	51.9/51.0
Cargo Volume (cu ft)	12.0	12.0	10.4	10.4	12.0
Passenger Volume (cu ft)	90.9	90.9	88.4	90.9	88.4

EXTERIOR MEASUREMENTS					
Wheelbase (in)	106.3	106.3	106.3	106.3	106.3
Length (in)	177.3	177.3	177.3	177.3	177.3
Height (in)	56.5	56.5	56.5	56.3	56.5
Width (in)	69.0	69.0	69.0	69.0	69.0
Track (in, front/rear)	59.0/60.2	59.0/60.2	59.0/60.2	59.1/60.2	59.0/60.2
Curb Weight (lbs, MT/AT)	2630/2692 (DX) 2648/2709 (DX-VP)	2687/2754 (LX/LX-S)	2747/2820 (EX) 2760/2831 (EX-L)	NA/2877	2954/NA

EPA MILEAGE ESTIMATES/FUEL CAPACITY ¹					
5-Speed Manual (City/Highway/Combined)	26/34/29	26/34/29	26/34/29		
6-Speed Manual (City/Highway/Combined)					21/29/24
5-Speed Automatic (City/Highway/Combined)	25/36/29	25/36/29	25/36/29		
CVT (City/Highway/Combined) ¹				40/45/42	
Fuel (gal)	13.2	13.2	13.2	12.3	13.2
Required Fuel	Regular Unleaded	Regular Unleaded	Regular Unleaded	Regular Unleaded	Premium Unleaded

SEATING					
Leather-Trimmed Interior/Heated Front Seats			EX-L	Available	
Driver's Seat with Manual Height Adjustment	•	•	•	•	•
Adjustable Head Restraints	•	•	•	•	•
Fold-Down Rear Seatback	•	•	60/40 Split		60/40 Split

*Horsepower and torque measured with IMA system.

†Does not apply to fluid and filter changes. May vary with driving conditions. See your owner's manual for more details.

SAFETY	DX/DX-VP	LX/LX-S	EX/EX-L	HYBRID	Si
3-Point Seat Belts at All Seating Positions	•	•	•	•	•
Front 3-Point Seat Belts with Automatic Tensioning System	•	•	•	•	•
Driver's and Front Passenger's Seat-Belt Reminder	•	•	•	•	•
Adjustable Front Seat-Belt Anchors	•	•	•	•	•
Dual-Stage, Dual-Threshold Front Airbags (SRS)	•	•	•	•	•
Front Side Airbags with Passenger-Side Occupant Position Detection System (OPDS)	•	•	•	•	•
Side Curtain Airbags	•	•	•	•	•
Driver's and Front Passenger's Active Head Restraints	•	•	•	•	•
Advanced Compatibility Engineering™ (ACE™) Body Structure	•	•	•	•	•
Anti-Lock Braking System (ABS)/Electronic Brake Distribution (EBD)	•	•	•	•	•
Vehicle Stability Assist™ (VSA™) with Traction Control			EX-L	•	•
Brake Assist			EX-L	•	•
Tire Pressure Monitoring System ⁹ (TPMS)	•	•	•	•	•
Daytime Running Lights (DRL)	•	•	•	•	•
Outboard Lower Anchors and Tethers for Children (LATCH)	•	•	•	•	•
Child-Proof Rear Door Locks	•	•	•	•	•
Emergency Trunk Release	•	•	•	•	•
EXTERIOR FEATURES					
One-Touch Power Moonroof with Tilt Feature			•		•
Integrated Rear-Window Antenna	•	•	•	Roof-Mounted	•
Security System with Remote Entry		•	with Trunk Release	with Trunk Release	with Trunk Release
Body-Colored Power Side Mirrors	Black/Manual	•	•	with Integrated Turn Indicators	•
Heated Side Mirrors			EX-L	with Leather	
Intermittent Windshield Wipers	2-Speed	2-Speed	Variable	Variable	Variable
Body-Colored Rear Spoiler		Decklid Spoiler (LX-S)		Decklid Spoiler	Low-Profile Wing Spoiler
Chrome Exhaust Finisher		•			•
Multi-Reflector Halogen Headlights	•	•	•	•	with Fog Lights
COMFORT & CONVENIENCE					
Air Conditioning with Air-Filtration System	DX-VP	•	•	Automatic Climate Control	•
Honda Satellite-Linked Navigation System™ ² with Voice Recognition			Available	Available	Available
Bluetooth® ³ HandsFreeLink®			with Navigation	with Navigation	with Navigation
Power Windows	•				
Power Windows with Auto-Up/Down Driver's Window		•	•	•	•
Power Door Locks with Auto-Lock Feature		•	•	•	•
Cruise Control		•	•	•	•
Perforated Leather-Wrapped Steering Wheel		LX-S	EX-L	with Leather	•
Aluminum Shift Knob with Leather/Textured Aluminum Pedals					•
Steering Wheel-Mounted Controls		Cruise	Cruise/Audio/ Navi (available)	Cruise/Audio/ Navi (available)	Cruise/Audio/ Navi (available)
Tilt and Telescopic Steering Column	•	•	•	•	•
Center Console with Sliding Armrest and Storage Compartment		•	•	•	•
Driver's and Front Passenger's Vanity Mirrors	•	•	•	•	•
Ambient Console Lighting					Red
Map Lights		•	•	•	•
12-Volt Power Outlet	•	•	•	•	•
AUDIO SYSTEMS					
160-Watt AM/FM/CD Audio System with 4 Speakers	DX-VP	•			
160-Watt AM/FM/CD Audio System with 6 Speakers			•	•	
350-Watt AM/FM/CD Premium Audio System with 7 Speakers, Including Subwoofer					•
MP3/Windows Media® Audio ⁴ (WMA) Playback Capability	DX-VP	•	•	•	•
MP3/Auxiliary Input Jack	DX-VP	•	•	•	•
USB Audio Interface ⁶			•	•	•
XM® Radio ⁷ /Digital Audio-Card Reader			with Navigation	with Navigation	with Navigation
CD Text Display Capability	DX-VP	•	•	•	•
Speed-Sensitive Volume Control (SVC)	DX-VP	•	•	•	•
INSTRUMENTATION					
Blue Backlit Gauges	•	•	•	•	Red
Idle-Stop Indicator				•	
Maintenance Minder™ System	•	•	•	•	•
Exterior Temperature Indicator			•	•	•
IMA® Charge and Assist Indicators				•	



Your dealer's team of trained technicians is at the ready to help keep your Honda in superb shape. All 2009 Honda vehicles—and any Honda Genuine Accessories installed at the time of purchase—are covered by the 3-year/36,000-mile New-Vehicle Limited Warranty.¹¹ Plus, Honda cars and trucks are covered by a 5-year/60,000-mile Limited Powertrain Warranty, too.¹¹ For more information or assistance, see your Honda dealer or please give us a call at 1-800-33-Honda.

HONDA

Financial Services

Whether you buy or lease a Honda vehicle, Honda Financial Services can assist you with the process. Please ask your dealer which lease or purchase plan best suits your needs.

HONDA Care

Honda Care® is an affordable, comprehensive vehicle and travel protection plan backed by Honda reliability, service and parts. Please see your Honda dealer for details.



Want your own look? Ask your dealer about Honda Genuine Accessories. They're designed, engineered and tested to meet the same exacting standards as your new vehicle—a high-quality way to make your new Honda one of a kind.

¹Based on 2009 EPA mileage estimates, reflecting new EPA fuel economy methods beginning with 2008 models. Use for comparison purposes only. Do not compare to models before 2008. Your actual mileage will vary depending on how you drive and maintain your vehicle. ²The Honda Satellite-Linked Navigation System is available on EX, Hybrid and Si models in the United States, except Alaska. See your Honda dealer for details. ³The Bluetooth® word mark and logos are owned by the Bluetooth SIG, Inc., and any use of such marks by Honda Motor Co., Ltd., is under license. ⁴Windows Media® is a trademark or registered trademark of Microsoft Corporation in the United States and/or other countries. ⁵Required XM® Radio monthly subscription sold separately after 90-day trial period. Installation costs and other fees and taxes may apply after initial trial period, including a one-time activation fee. All fees and programming subject to change. Subscriptions subject to Customer Agreement available at xmradio.com. XM service only available in the 48 contiguous United States. The XM name is a registered trademark of XM Satellite Radio Inc. ⁶The USB Audio Interface is used for direct connection to and control of some current digital audio players and other USB devices that contain MP3, WMA or AAC music files. Some USB devices with security software and digital rights-protected files may not work. Please see your dealer for details on compatibility. ⁷AT-PZEV (Advanced Technology Partial Zero-Emission Vehicle) as certified by the California Air Resources Board (CARB) in California and states that have adopted California emissions standards. ⁸Battery-pack limited warranty may vary. Consult the warranty booklet found in dealership. ⁹For optimal tire wear and performance, tire pressure should be checked regularly with a gauge. Do not rely solely on the monitor system. See your owner's manual for details. ¹⁰Michelin®, Pilot® and Exalto® are registered trademarks of Michelin North America, Inc. ¹¹**3-Year/36,000-Mile Limited Warranty. 5-Year/60,000-Mile Limited Powertrain Warranty.** Ordinary maintenance or adjustments, parts subject to normal wear and replacement, and certain items are excluded. See your Honda dealer for the terms and conditions of the limited warranties. ¹²Kelley Blue Book's kbb.com awarded Honda three Best Resale Value Awards for the 2008 Civic, the 2008 Civic Hybrid and the 2008 Odyssey. www.kbb.com/ovr08. Vehicle's projected resale value is specific to the 2008 model year. Kelley Blue Book is a registered trademark of Kelley Blue Book Co., Inc. ¹³Based on 2008 model-year study. IntelliChoice® Inc. www.intellichoice.com. ¹⁴*Automotive Lease Guide*, 2008 Industry Brand Residual Value Award. **Always use seat belts and appropriate child seats. Children 12 and under are safest when properly restrained in the rear seat.** Specifications, features, illustrations and equipment shown in this brochure are based upon the latest available information at the time of printing. Although descriptions are believed to be correct, accuracy cannot be guaranteed. American Honda Motor Co., Inc., reserves the right to make changes at any time, without notice or obligation, in colors, specifications, accessories, materials and models. Some features mentioned herein are not available in all areas. See your Honda dealer for details. Some vehicles may be shown with optional equipment. Available – Optional. All images contained herein are either owned by American Honda Motor Co., Inc., or used under a valid license. It is a violation of federal law to reproduce these images without express written permission from American Honda Motor Co., Inc., or the individual copyright owner of such images. Honda Financial Services is a DBA of American Honda Finance Corporation. Honda, the H-mark symbol, Honda Care, Honda Satellite-Linked Navigation System, HondaJet, Advanced Compatibility Engineering, ACE, Drive-by-Wire, Integrated Motor Assist IMA, i-VTEC, Maintenance Minder, Vehicle Stability Assist and VSA are trademarks of Honda Motor Co., Ltd. © 2008 American Honda Motor Co., Inc.



CIVIC Si SEDAN



CIVIC SEDAN



CIVIC HYBRID



CIVIC Si COUPE



CIVIC COUPE

Over 25 years ago Honda began assembling cars in the United States. Today, almost 4 out of 5 Hondas sold in the U.S. are assembled in North America. Many are developed here, too. And every Honda is a smart value thanks to timeless design, great reliability and extended maintenance intervals. Check out our Best Resale Value Awards¹² from *Kelley Blue Book's* kbb.com, Best Overall Value Awards from IntelliChoice^{®13} and – for the fifth year in a row – Industry Brand Residual Value Award from *Automotive Lease Guide*.¹⁴



www.kbb.com



Automotive Lease Guide
www.aleg.com

